

# silvermine

New  
Members  
2023

January 12 - February 16

## New Members Exhibit

January 12 - February 16

Silvermine Arts Center welcomes 26 new members into its historic Guild of Artists, with this exhibition presenting innovative work in a variety of mediums and styles.

Silvermine has been a place for artists to gather since 1906 when visionary sculptor Solon Borglum moved to the area and held annual exhibitions in his studio. He created weekly artist-critiques called the Knockers Club. Formed in 1922, The Silvermine Guild of Artists was incorporated in 1924 as a not-for-profit to provide a permanent and supportive community of artists. Guild members represent artists that have a high level of accomplishment and are selected through a jurying process. Since that time, Guild membership has grown to over 300 nationally and internationally exhibiting artists. Membership has included such renowned artists as Abe Ajay, James Daugherty, Carlus Dyer, James Flora, James Grashow, Robert Kaupelis, Alice Neel, Gabor Peterdi, Charles Reiffel, James Rosenquist and honorary member Faith Ringgold.

Since its inception, guild membership has been a selective peer jurying process. As a result, the guild has held its membership to high standards with many members having work represented in permanent collections of some of the world's most prestigious museums, as well as prominent private and corporate collections. This exhibition offers visitors an opportunity to engage with the newest members of this dynamic community of professional artists and learn about their works.

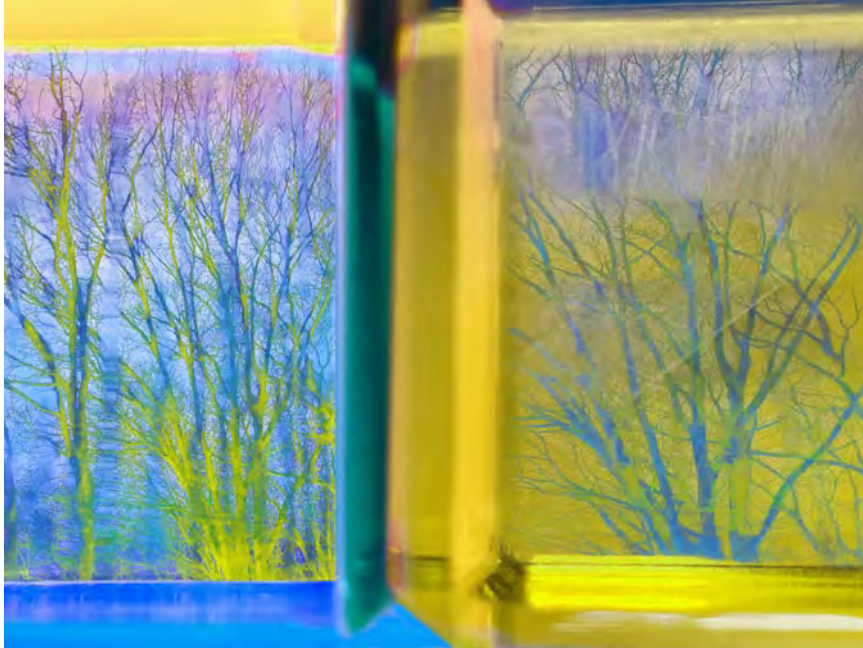
Artists

Leslie Alexander - Old Lyme, CT  
Todd Arsenault - Carlisle, PA  
Susan Barrett - Sleepy Hollow, NY  
Susan Bradley - Collinsville, CT  
Christopher Brown - Watertown, CT  
Linda Colletta - Redding, CT  
Meghan Cox - Philadelphia, PA  
Phyllis Crowley - New Haven, CT  
Carmen DeCristo - Brooklyn, NY  
Tielin Ding - New York, NY  
Patti Ettinger - Chappaqua, NY

June Farnham - Ossining, NY  
Michele Gage - Pound Ridge, NY  
Ning Jia - Woodbridge, CT  
Natalya Khorover - Mamaroneck, NY  
Robert Lansden - Norwalk, CT  
Rita Maas - Somers, NY  
Robert Oehl - Hudson, NY  
Carol Paik - Pound Ridge, NY  
Michael Ricigliano - Locust Valley, NY  
Narelle Sissons - New Canaan, CT  
Michael Yamaoka - South Salem, NY



Leslie Alexander  
Old Lyme, CT



*Swallow Sunlight Clockwise*  
pigment ink on canvas, 30 x 40 inches, \$3,800.

Leslie Alexander  
Old Lyme, CT



*Today's Sharp Sparkle*  
pigment ink on canvas, 30 x 40 inches, \$3,800.

Leslie Alexander

Old Lyme, CT



*Folding Into Unseen, Unseen Into Seen*  
pigment ink on canvas, 30 x 40 inches, \$3,800.

Todd Arsenault

Carlisle, PA



*A Thousand Flames Lighted His Way*  
oil on canvas, 30 x 35 inches, \$1,800.



Todd Arsenault  
Carlisle, PA



*Blockheads*  
oil on canvas, 36 x 42 inches, \$2,800.

Todd Arsenault  
Carlisle, PA



*Remarkable Things have Fallen from the Sky*  
oil on canvas, 36 x 42 inches, \$2,800.

Susan Barrett  
Sleepy Hollow, NY



*Francis Street 2*  
acrylic on canvas, 36 x 36 x 2 inches, \$4,700.

Susan Barrett  
Sleepy Hollow, NY



*Imagine (Atlas Meats)*  
acrylic on canvas, 36 x 36 x 2 inches, \$4,700.



Susan Barrett  
Sleepy Hollow, NY



*New Jersey Turnpike (Tree of Life)*  
acrylic on canvas, 36 x 36 x 2 inches, \$4,700.

Susan Barrett  
Sleepy Hollow, NY



*Rhode Island Cottages*  
acrylic on canvas, 36 x 36 x 2 inches, \$4,700.



Susan Bradley  
Collinsville, CT



*Acadia*  
oil on canvas, 48 x 36 inches, \$2,000.

Susan Bradley  
Collinsville, CT



*Ancestors*  
oil on canvas, 30 x 24 inches, \$2,000.

Susan Bradley

Collinsville, CT



*Charlie Banks*

oil on canvas, 30 x 24 inches, \$3,000.

Christopher Brown

Watertown, CT



*Each Reign Spills Into The Sea (Veiled Surface, Iteration 5)*

oil on paper glued to panel, 31 x 79 inches, \$5,900.



Christopher Brown

Watertown, CT



*Firmament*

oil on canvas, 39.5 x 50.5 inches, \$5,000.

Linda Colletta

Redding, CT



*Futurama*

acrylic on raw woven canvas, 74 x 54 inches, \$6,800.

Linda Colletta

Redding, CT



*Launch Me Into Space*

acrylic on raw woven canvas, 60 x 120 inches, \$8,800.

Meghan Cox

Philadelphia, PA



*that day i ate five candies*

oil on paper over panel, 14 x 11 inches, \$1,400.



Meghan Cox  
Philadelphia, PA



*that day i ate an arugula wreath*  
oil on paper over panel, 14 x 11 inches, \$1,400.

Meghan Cox  
Philadelphia, PA



*that day and guava chip*  
oil on paper over panel, 14 x 12 inches, \$1,400.

Meghan Cox

Philadelphia, PA

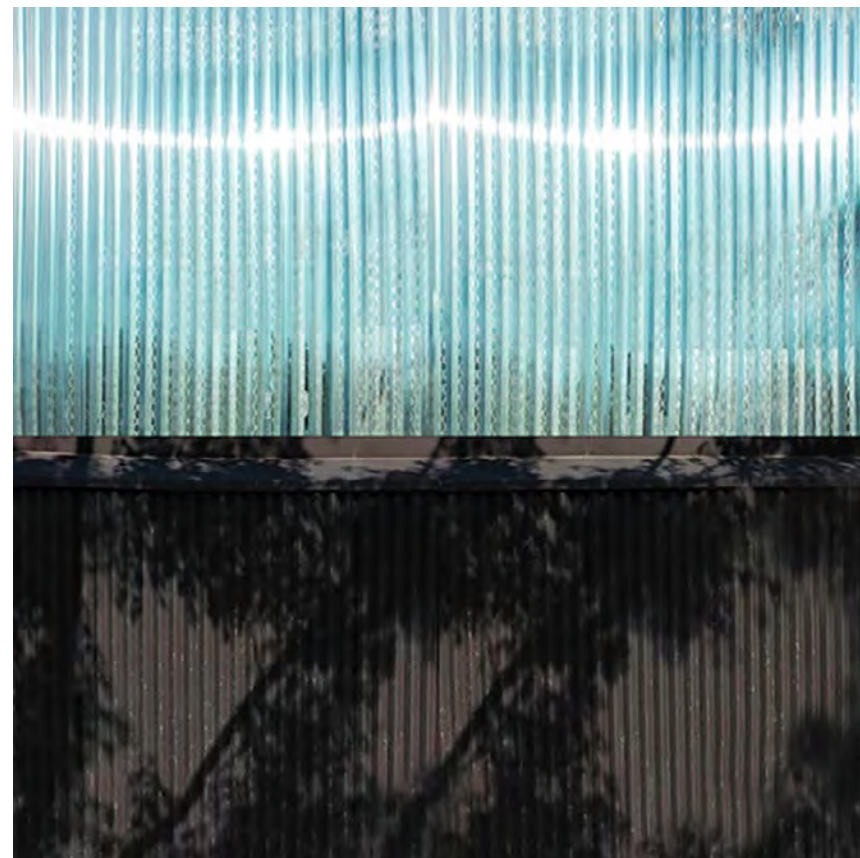


*that day and melon*

oil on paper over panel, 14 x 12 inches, \$1,400.

Phyllis Crowley

New Haven, CT



*City Shimmer*

pigment print, 26 x 26 inches, \$1,500.



Phyllis Crowley

New Haven, CT



*Firmament*

pigment print, 42.2 x 26 inches, \$1,600.

Phyllis Crowley

New Haven, CT



*Ichthys*

pigment print, 50 x 16.4 inches, \$1,600.

Carmen DeCristo

Brooklyn, NY



*DJ Soo Intoit & AngelKitten at Pirate Studios*  
inkjet print, 17 x 22 inches, \$500.

Carmen DeCristo

Brooklyn, NY



*Gabby in the Park*  
inkjet print, 10 x 7 inches, \$450.



Carmen DeCristo

Brooklyn, NY



*A Stranger Under the Lights*  
inkjet print, 10 x 8 inches, \$300.

Carmen DeCristo

Brooklyn, NY



*Caia in the Subway*  
inkjet print, 13 x 10 inches, \$450.

Carmen DeCristo

Brooklyn, NY



*Bri Joy & Ty Pride*  
inkjet print, 24 x 20 inches, \$650.

Tielin Ding

New York, NY



*The Truck*  
scratches on metallic paper, 30 x 20 inches, \$2,500.



Tielin Ding  
New York, NY



*Matches of Matches*  
archival pigment print, 24 x 16 inches, \$2,000.

Tielin Ding  
New York, NY



*Untitled*  
archival pigment print, 16 x 24 inches, \$2,000.

Patti Ettinger

Chappaua, NY



*The Rising*

oil on canvas, feathers, branches, leaves, 84 x 36 inches, \$8,500.

Patti Ettinger

Chappaua, NY



*Ursa Major*

oil, gold foil on canvas, 79 x 36 inches, \$10,000.



June Farnham  
Ossining, NY



*Let it Flow*  
acrylic on canvas, 36 x 25 inches, \$1,800.

June Farnham  
Ossining, NY



*Ripple*  
acrylic on canvas, 36 x 24 inches, \$1,800.

June Farnham  
Ossining, NY



*Serene*  
acrylic on canvas, 36 x 24 inches, \$1,800.

Michele Gage  
Pound Ridge, NY



*Room for Everyone*  
watercolor on paper, 35 x 26 inches \$1,000.



Michele Gage

Pound Ridge, NY



*On the Aisle*

watercolor on paper, 35 x 26 inches, \$1,000.

Michele Gage

Pound Ridge, NY



*Close Call*

watercolor on paper, 35 x 26 inches, \$1,000.

Ning Jia  
Woodbridge, CT



*I-91 to the Merritt*  
oil on wood panel, 30 x 40 inches, \$2,400.

Ning Jia  
Woodbridge, CT



*I-84 (Crossing Highway)*  
oil on wood panel, 30 x 40 inches, \$2,400.

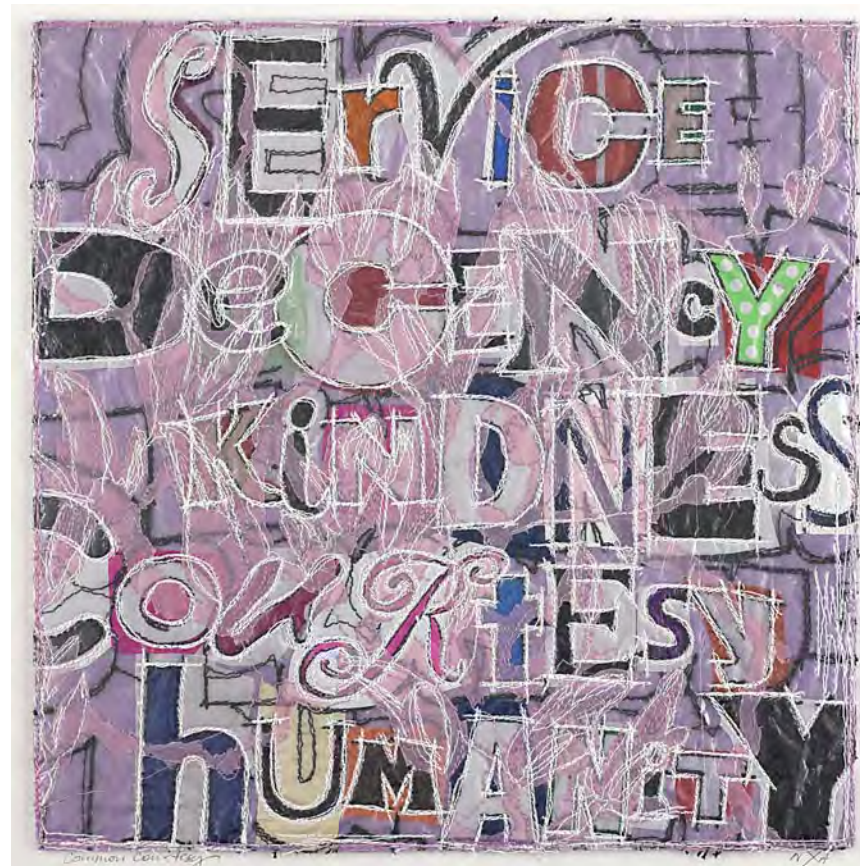


Ning Jia  
Woodbridge, CT



*I-84 to I-91*  
oil on wood panel, 30 x 40 inches, \$2,400.

Natalya Khorover  
Mamaroneck, NY

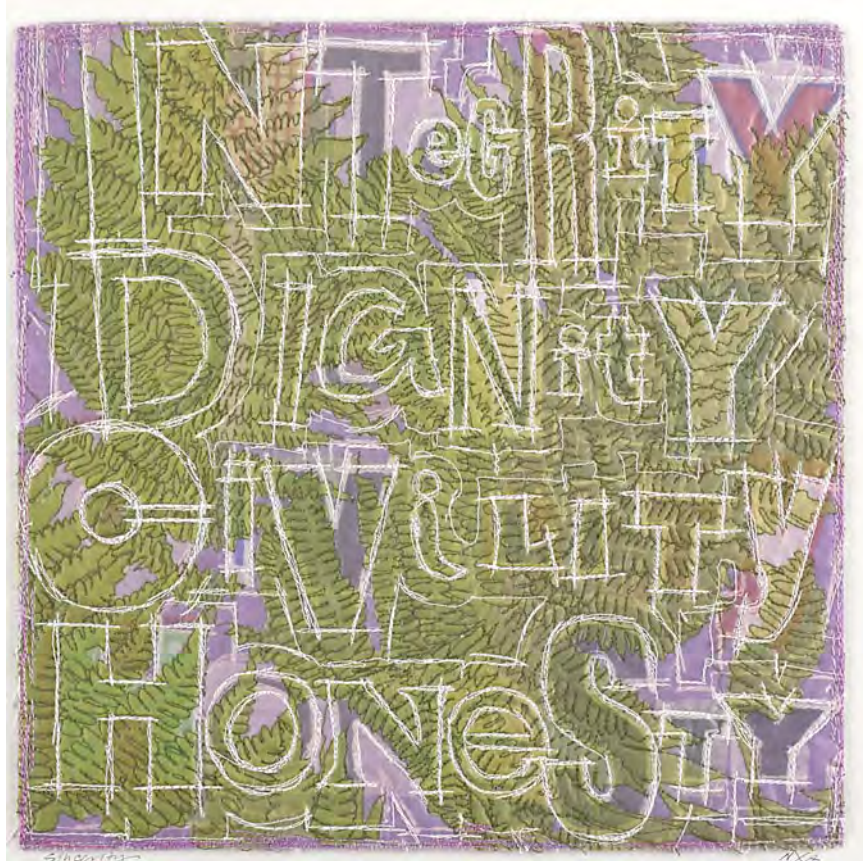


*Common Courtesy*  
single-use plastic collage, stitched on mat board, 12 x 12 inches, \$580.



Natalya Khorover

Mamaroneck, NY

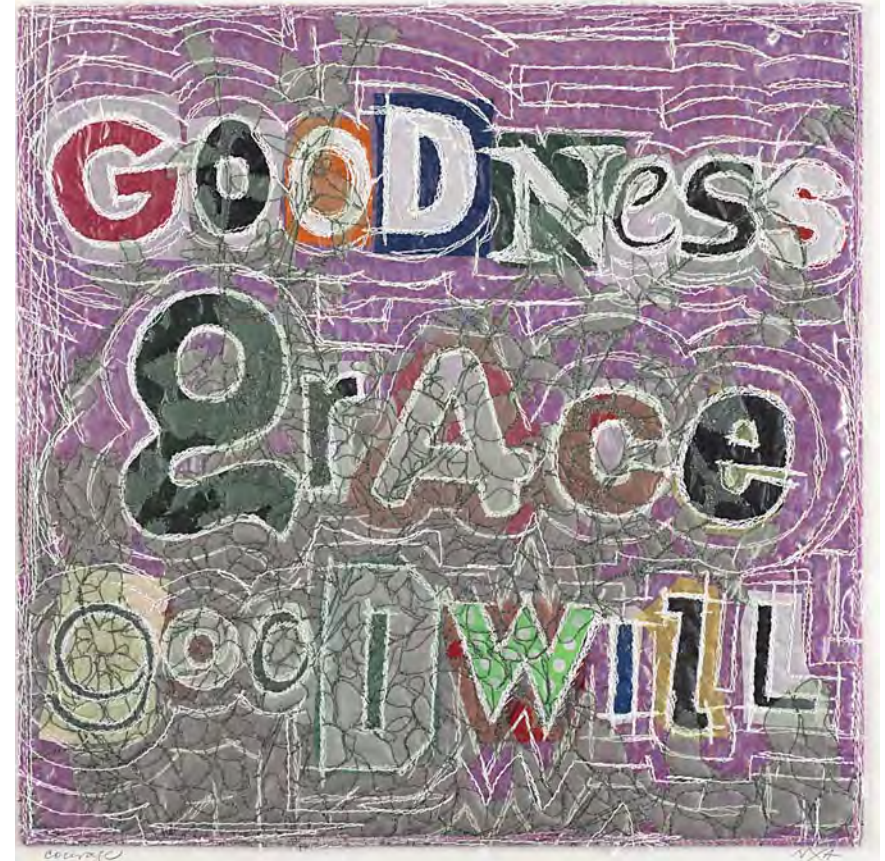


*Sincerity*

single-use plastic collage, stitched on mat board, 12 x 12 inches, \$580.

Natalya Khorover

Mamaroneck, NY

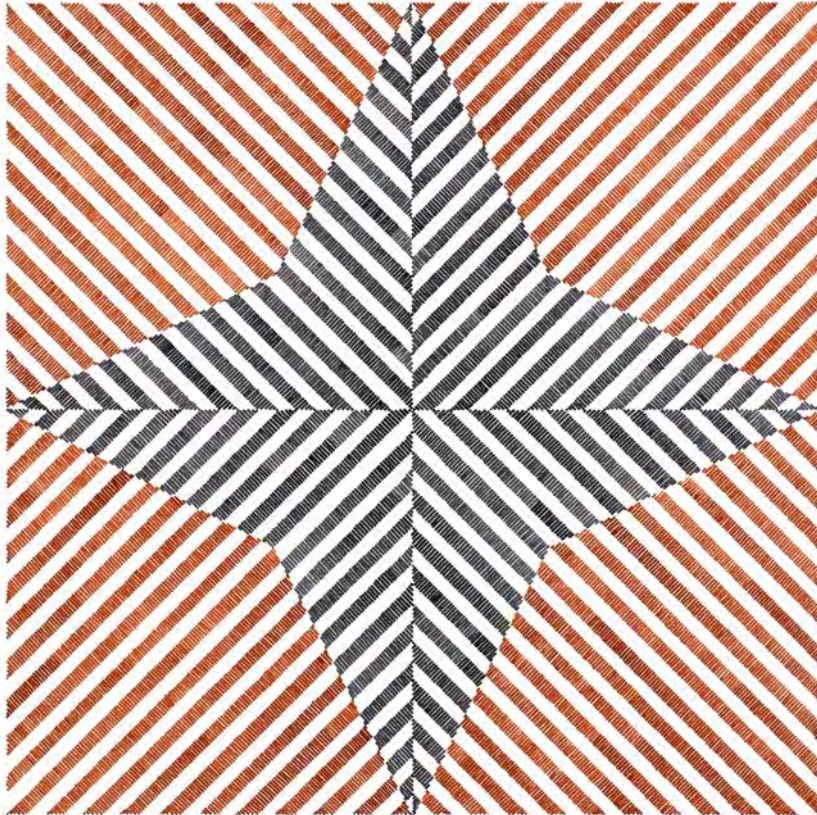


*Courage*

single-use plastic collage, stitched on mat board, 12 x 12 inches, \$580.

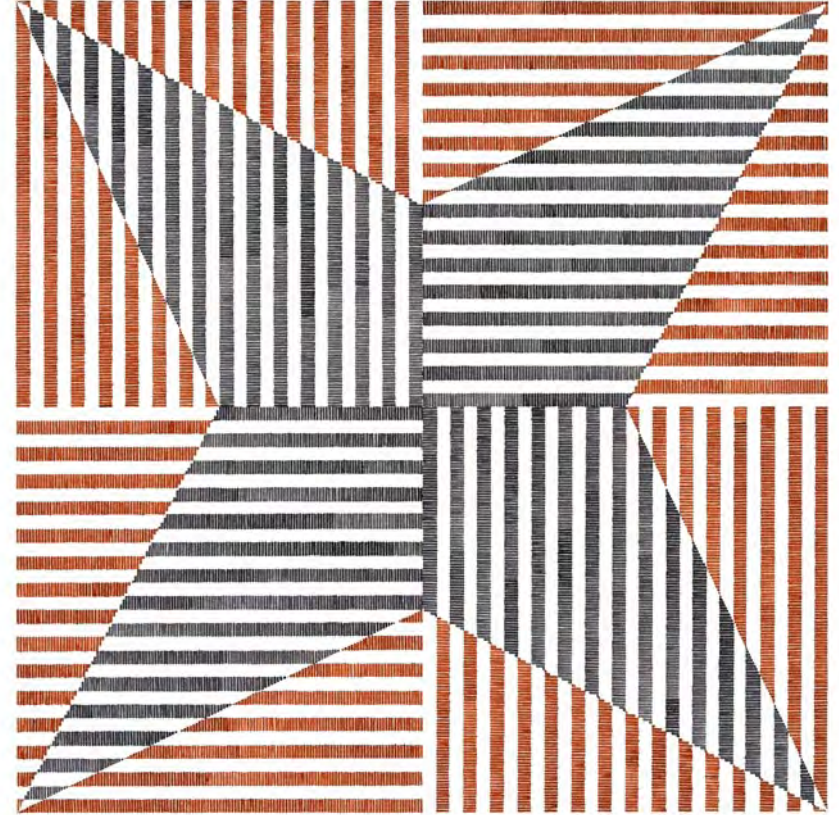


Robert Lansden  
Norwalk, CT



*at•one 12*  
watercolor, graphite on paper, 22 x 22 inches, \$3,800.

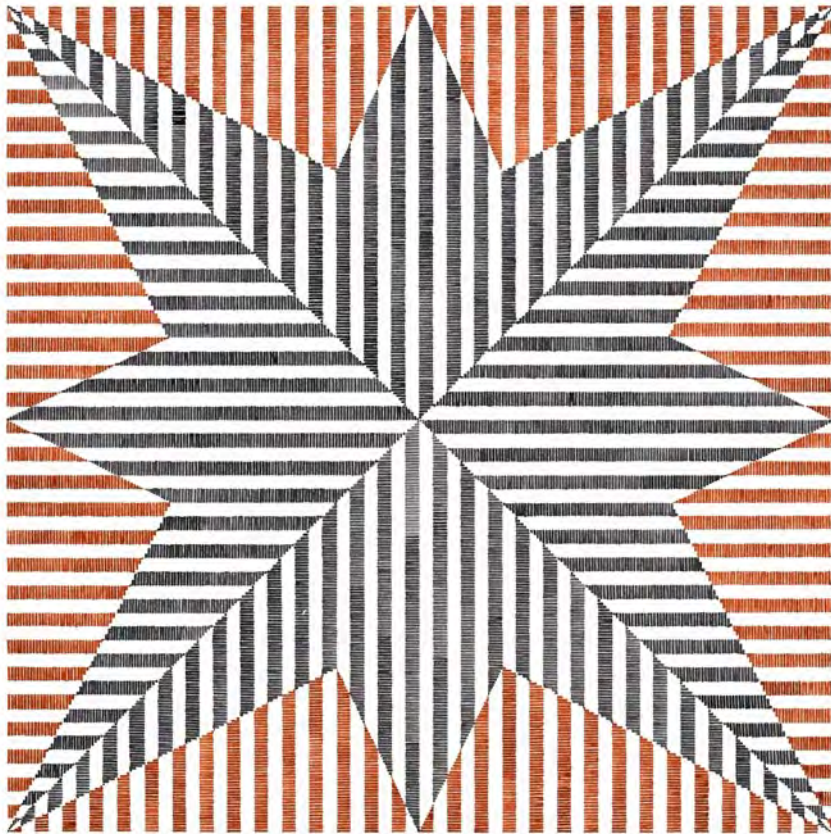
Robert Lansden  
Norwalk, CT



*at•one 14*  
watercolor, graphite on paper, 22 x 22 inches, \$3,800.

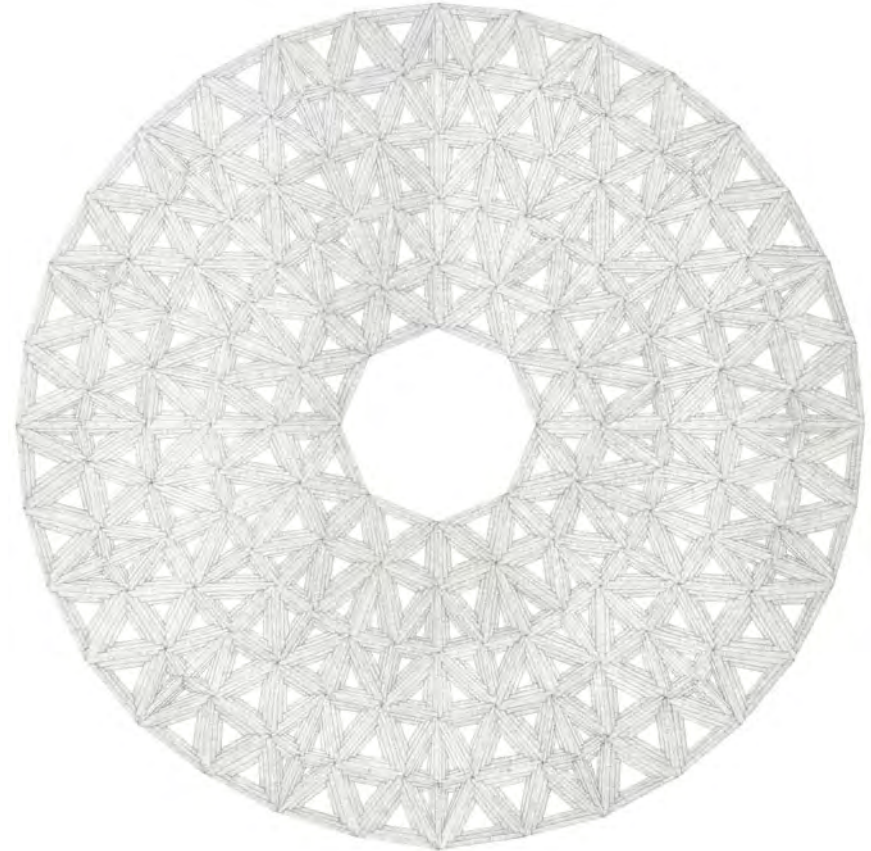


Robert Lansden  
Norwalk, CT



*at•one 16*  
watercolor, graphite on paper, 22 x 22 inches, \$3,800.

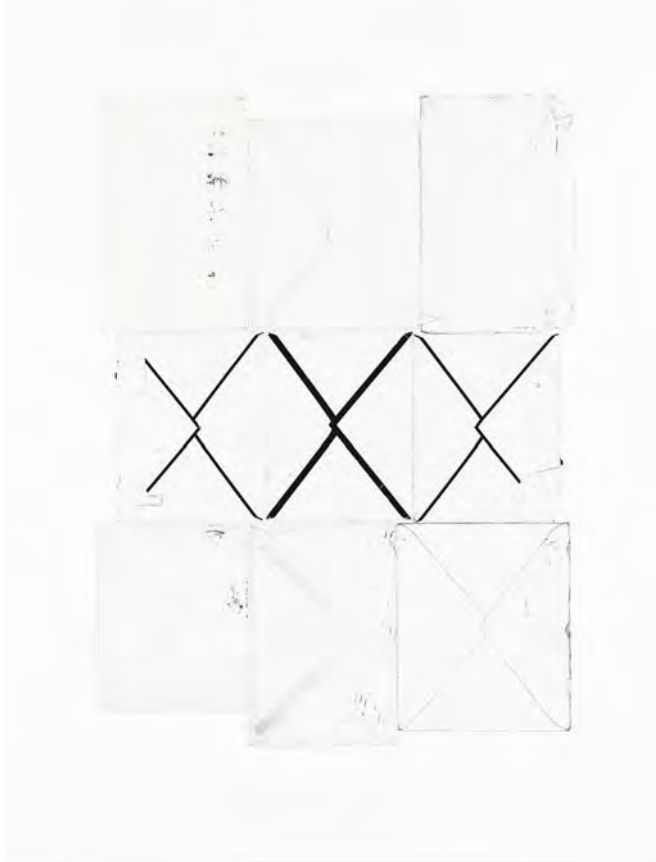
Robert Lansden  
Norwalk, CT



*No Mud No Lotus #2*  
graphite on paper, 30 x 30 inches, \$6,200.



Rita Maas  
Somers, NY



*Salutations 2130*

archival pigment print, graphite, colored pencil on Red River Aurora  
natural photo paper, 22 x 17 inches, \$850.

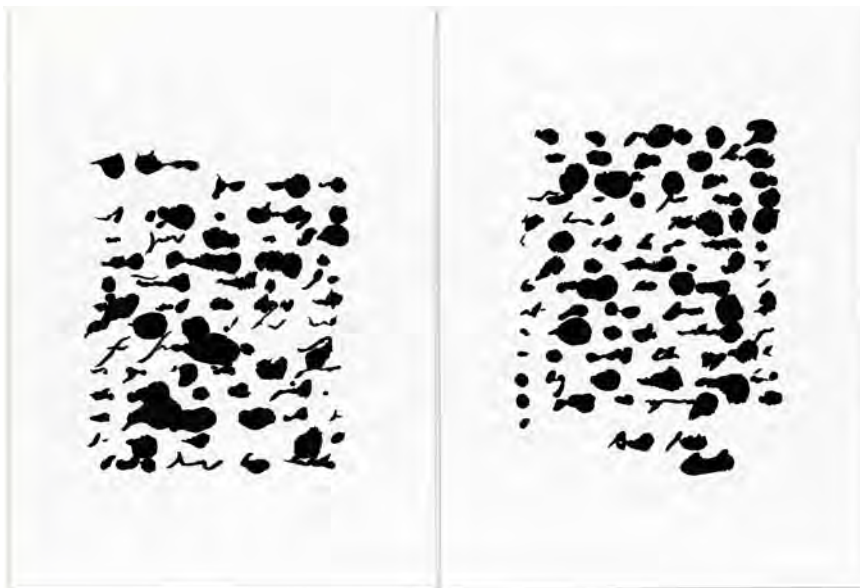
Rita Maas  
Somers, NY



*Salutations 2127*

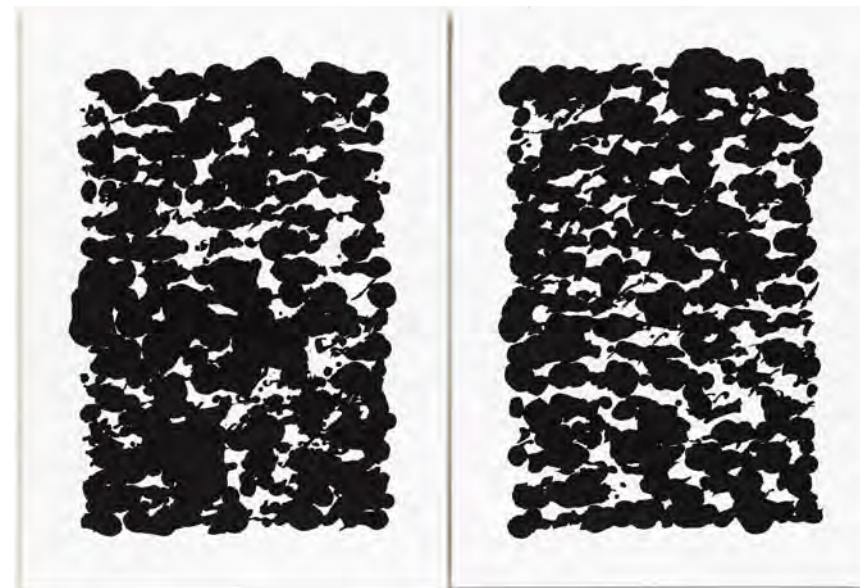
archival pigment print, graphite, colored pencil on Red River Aurora  
natural photo paper, 22 x 17 inches, \$850.

Rita Maas  
Somers, NY



*Salutations 2109*  
monoprint with reclaimed ink on Red River Aurora  
natural photo paper, 13 x 19 inches, \$750.

Rita Maas  
Somers, NY



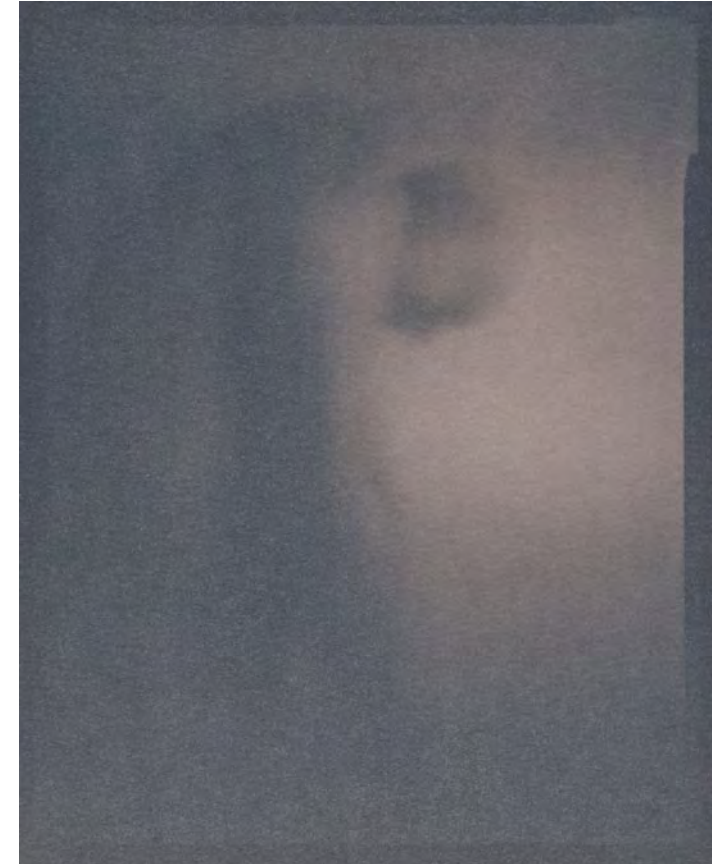
*Salutations 2124*  
monoprint with reclaimed ink on Red River Aurora  
natural photo paper, 13 x 19 inches, \$750.

Robert Oehl  
Hudson, NY



*Anonymous*  
toned cyanotype photograph, 5 x 4 inches, \$725.

Robert Oehl  
Hudson, NY



*Hangover*  
toned cyanotype photograph, 5 x 4 inches, \$725.



Robert Oehl  
Hudson, NY



*Bust*  
toned cyanotype photograph, 4 x 5 inches, \$725.

Robert Oehl  
Hudson, NY



*Dazed*  
toned cyanotype photograph, 4 x 5 inches, \$725.

Robert Oehl  
Hudson, NY



*Diary Box*  
24 toned cyanotype photographs, encaustic, glass box,  
8 x 31.5 x 18 inches, \$8,500.

Carol Paik  
Pound Ridge, NY



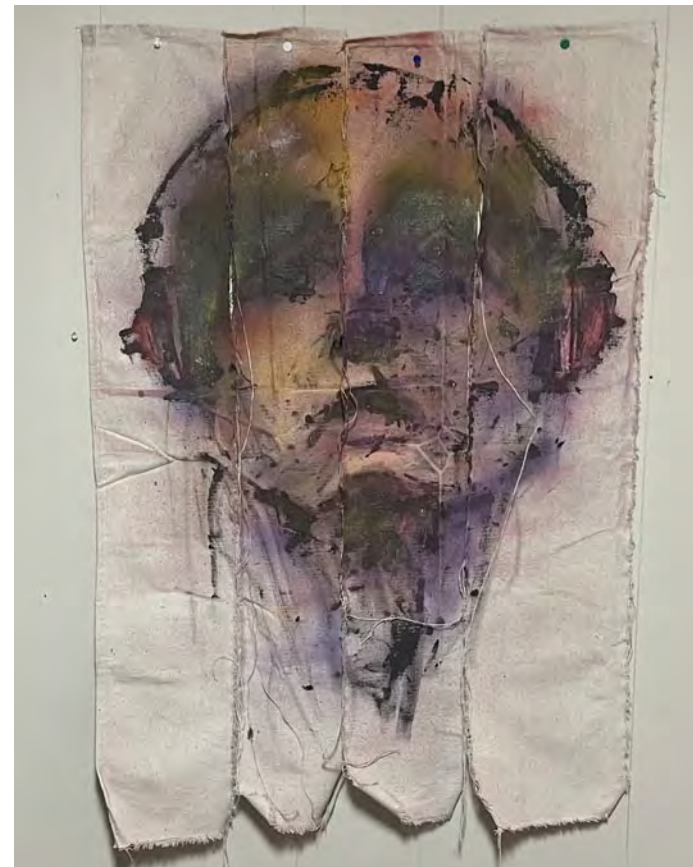
*Continuance*  
repurposed fabrics, 56 x 48 inches, \$3,500.

Carol Paik  
Pound Ridge, NY



*Dioscuri*  
repurposed fabrics, 82 x 58 inches, \$3,500.

Michael Ricigliano  
Locust Valley, NY



*Headphones I*  
acrylic, spraypaint on drop cloth, 24 x 30 inches, \$1,500.



Michael Ricigliano

Locust Valley, NY



*Headphones II*

acrylic, spraypaint on drop cloth, 24 x 30 inches, \$1,500.

Michael Ricigliano

Locust Valley, NY



*Headphones III*

acrylic, spraypaint on drop cloth, 24 x 30 inches, \$1,500.

Narelle Sissons  
New Canaan, CT



*Fiction*  
acrylic on canvas, 12 x 12 inches, \$250.

Narelle Sissons  
New Canaan, CT



*Adjust*  
acrylic on canvas, 12 x 12 inches, \$250.



Narelle Sissons

New Canaan, CT



*Distance*

acrylic on canvas, 12 x 12 inches, \$250.

Michael Yamaoka

South Salem, NY



*Amazing Grace*

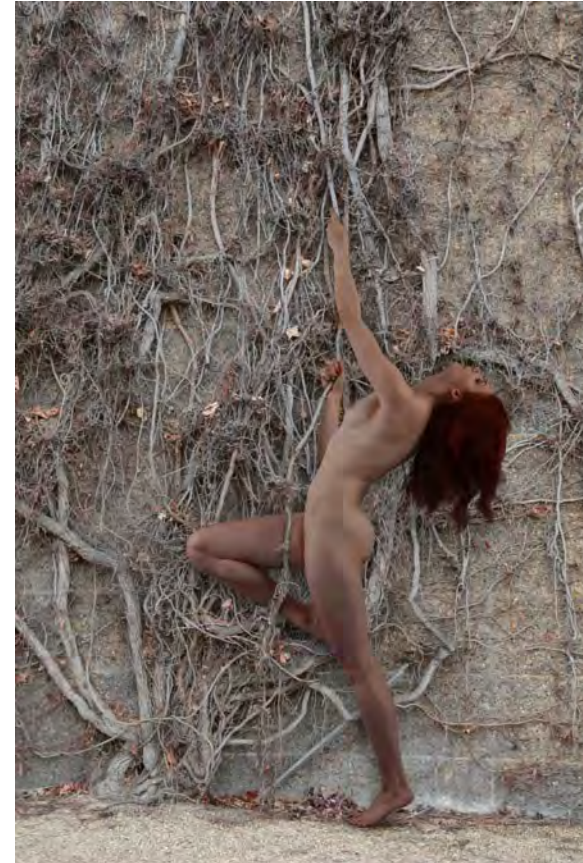
digital photograph, edition 2/9, 42 x 42 inches, \$5,000.

Michael Yamaoka  
South Salem, NY



*Spirit of the West*  
digital photograph, edition 3/9, 29 x 29 inches, \$4,500.

Michael Yamaoka  
South Salem, NY



*Hope/Survival*  
digital photograph, edition 2/9, 42.5 x 34 inches, \$5,000.



## Silvermine Guild of Artists

Silvermine has been a place for artists to gather since 1906 when visionary sculptor Solon Borglum moved to the area and held annual exhibitions in his studio. He created weekly artist-critiques called the Knockers Club. Formed in 1922, The Silvermine Guild of Artists was incorporated in 1924 as a not-for-profit to provide a permanent and supportive community of artists. Guild members represent artists that have a high level of accomplishment and are selected through a jurying process.

Silvermine Guild of Artists has been a hub for some of the most talented artists in the Northeast. Guild membership has grown to almost 300 artist members nationwide, and has included such renowned artists as Abe Ajay, James Daugherty, Carlus Dyer, James Flora, James Grashow, Robert Kaupelis, Alice Neel, Gabor Peterdi, Charles Reiffel, James Rosenquist and honorary member Faith Ringgold.

Since its inception, guild membership has been a selective peer jurying process. As a result, the guild has held its membership to high standards with many members having work represented in permanent collections of some of the world's most prestigious museums, as well as prominent private and corporate collections.

## Silvermine Galleries

Silvermine Galleries represents the Silvermine Guild of Artists. Our Galleries have exhibited art luminaries including Joseph Albers, Gabor Peterdi, Milton Avery, Elaine deKooning, Clement Greenberg, Alice Neel, Louise Nevelson, Larry Rivers, Christo and Jeanne-Claude, Faith Ringold, James Rosenquist, Chuck Close, Philip Johnson, and many others.

The Galleries continue to expand on our heritage through compelling exhibitions of art by emerging and internationally recognized artists. A distinguished list of curators have juried many of our landmark exhibitions, among them are Dore Ashton, Milton Avery, Bill Carroll, Tom Eccles, Andre Emmerich, Jennifer Farrell, Henry Geldzahler, Patricia Hickson, Hilton Kramer, Beth McLaughlin, Barbara O'Brien, David Ross, Holly Solomon, Allan Stone, Ann Temkin, and Marcia Tucker.

Our exhibitions are accompanied by programming that encourages appreciation of art and its role in society. Our layered approach is tailored to make our exhibitions meaningful, accessible, and enjoyable for diverse audiences of every age and background and always offer opportunities for visitors to connect with art, and each other through an exploration of ideas.

# Board Of Trustees

## Co-Chairs

Rose-Marie Fox  
Svetlin Tchakarov

## Vice Chair

Barbara Linarducci\*

## Secretary

Mark Carta

## Treasurer

Grace Tang

## Board Members

William Hilson  
Michelle Loh  
Dmitri Wright

## Guild Co-Chairs

Roger Mudre\*  
Jon Puzzuoli  
\* Ex-Officio

## Honorary Board

Cynthia Guest  
Sally Sheehy  
Leonard Tow  
Diana Wege



# Gallery Staff

## Gallery Director

Roger Mudre  
roger@silvermineart.org  
203.966.9700 x26

## Gallery Assistant

Megan Jackson  
sacgallery@silvermineart.org  
203.966.9700 x20

## Gallery Assistant

Danny Claudel-Bronson  
gallery2@silvermineart.org  
203.966.9700 x28





# Silvermine

Silvermine Arts Center 1037 Silvermine Road New Canaan, CT 06840  
[www.silvermineart.org](http://www.silvermineart.org)