



# Silvermine

Jeremy Stenger  
Solo Exhibit

January 22 - February 25

## Jeremy Stenger

Board Chair Grand Prize Awardee PAINT 2021



Stenger was born in San Diego, CA in 1973 and lives and works in Brooklyn, NY. He received a BFA from California College of Art in 1996 and an MFA from Hunter College in 1999. His work has been exhibited at Kristen Lorello, New York, Hosfelt Gallery, San Francisco/NY, St. Charles Project Space, Baltimore, MD, and Rare Gallery, New York, NY, among other venues, and has been discussed in New York Magazine, The New York Times, and The Village Voice, among other publications. Collections include the Frederick R. Weisman Foundation, Los Angeles, CA, among others.

## Artist Statement

Contour drawings of plants, leaves, and flowers unfold along the surface of each work in an all-over composition. Imagery is influenced by Matisse's cut-outs and Ellsworth Kelly's drawings of plants, as well as the artist's direct observation of flowers and fallen leaves. Repeated organic forms create a screen that organizes planes of color in various hues, suggesting traces and erasures. Grey-white includes faded shades of pink and yellow. Deep green reveals traces of yellow and white, the texture of the canvas's weave, and the suggestion of light. Areas of paint suggest three-dimensional relief, an effect created in part by Stenger's process of repeatedly layering paint onto the surface of the canvas and removing it within particular outlines. The works reveal a close examination of the process of painting as an act of depicting and covering and connect the painted image with the flatness of printing and the dimensionality of sculpture.

*All work courtesy of the Artist and Kristen Lorello, NY.  
Photos by Jeffrey Sturges, paintings, Lance Brewer, works on paper*



*Untitled*  
acrylic on canvas, 50 x 38 inches, \$6,400.





*Untitled*  
acrylic on canvas, 50 x 38 inches, \$6,400.

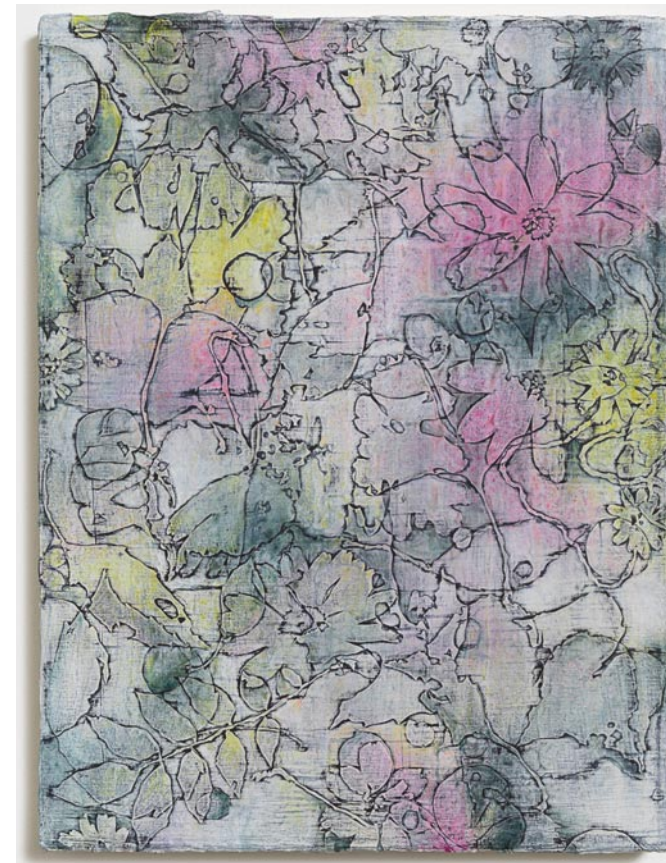


*Untitled*  
acrylic on canvas, 48 x 36 inches, \$6,400.



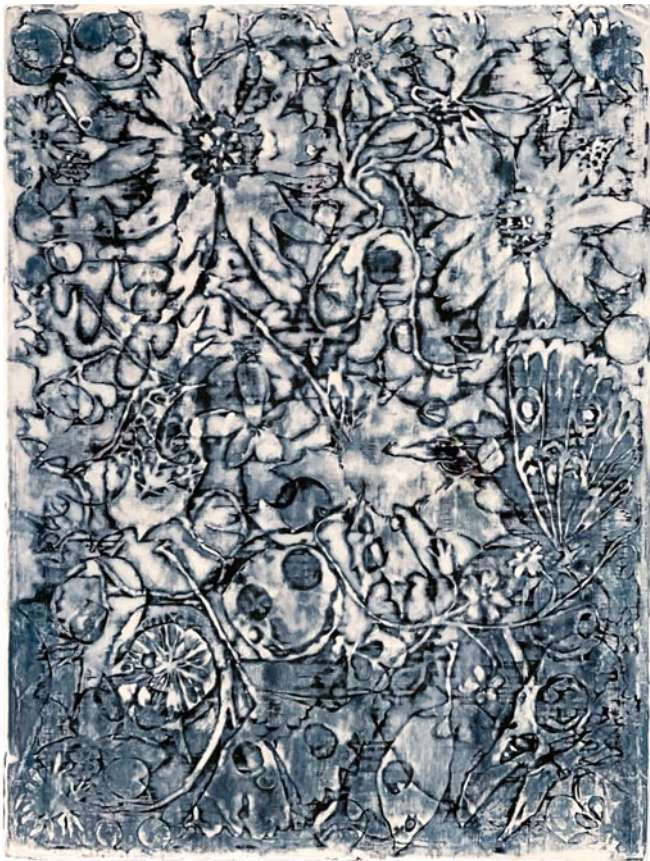


*Untitled*  
acrylic on canvas, 46 x 38 inches, \$6,400.



*Untitled*  
acrylic on canvas, 24 x 18 inches, \$2,400.





*Blue Calyces*  
acrylic on canvas, 24 x 18 inches, \$2,400.



*Perforant Path*  
acrylic on paper, 15.75 x 13.75 inches, \$1,000.



*Embrace*

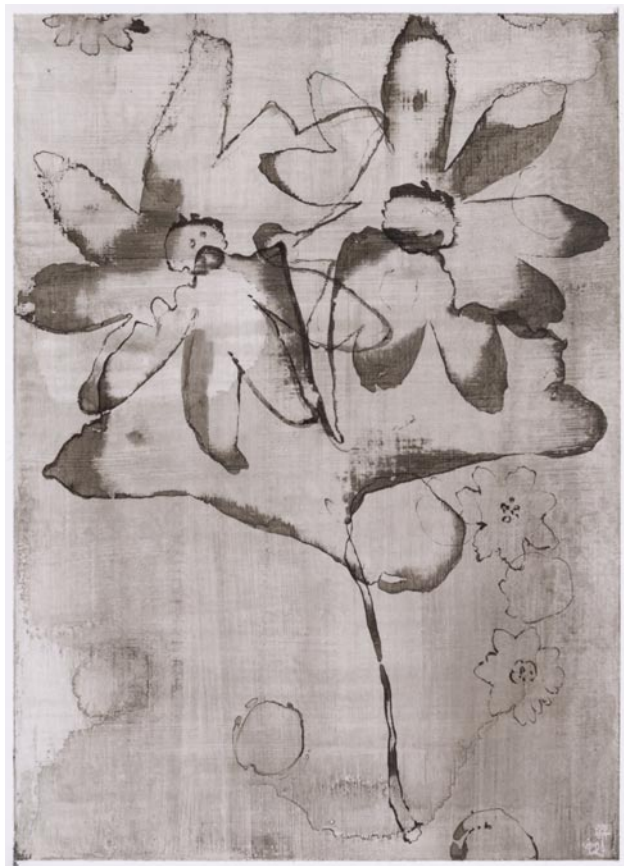
acrylic on paper, 15.75 x 13.75 inches, \$1,000.



*Senecio*

acrylic on paper, 15.75 x 13.75 inches, \$1,000.





*Unrecognizable Embrace*  
 acrylic on paper, 15.75 x 13.75 inches, \$1,000.



*Calyces*  
 acrylic on paper, 15.75 x 13.75 inches, \$1,000.



## Silvermine Guild of Artists

Silvermine has been a place for artists to gather since 1906 when visionary sculptor Solon Borglum moved to the area and held annual exhibitions in his studio. He created weekly artist-critiques called the Knockers Club. Formed in 1922, The Silvermine Guild of Artists was incorporated in 1924 as a not-for-profit to provide a permanent and supportive community of artists. Guild members represent artists that have a high level of accomplishment and are selected through a jurying process.

Silvermine Guild of Artists has been a hub for some of the most talented artists in the Northeast. Guild membership has grown to almost 300 artist members nationwide, and has included such renowned artists as Abe Ajay, James Daugherty, Carlus Dyer, James Flora, James Grashow, Robert Kaupelis, Alice Neel, Gabor Peterdi, Charles Reiffel, James Rosenquist and honorary member Faith Ringgold.

Since its inception, guild membership has been a selective peer jurying process. As a result, the guild has held its membership to high standards with many members having work represented in permanent collections of some of the world's most prestigious museums, as well as prominent private and corporate collections.

## Silvermine Galleries

Silvermine Galleries represents the Silvermine Guild of Artists. Our Galleries have exhibited art luminaries including Joseph Albers, Gabor Peterdi, Milton Avery, Elaine deKooning, Clement Greenberg, Alice Neel, Louise Nevelson, Larry Rivers, Christo and Jeanne-Claude, Faith Ringold, James Rosenquist, Chuck Close, Philip Johnson, and many others.

The Galleries continue to expand on our heritage through compelling exhibitions of art by emerging and internationally recognized artists. A distinguished list of curators have juried many of our landmark exhibitions, among them are Dore Ashton, Milton Avery, Bill Carroll, Tom Eccles, Andre Emmerich, Jennifer Farrell, Henry Geldzahler, Patricia Hickson, Hilton Kramer, Beth McLaughlin, Barbara O'Brien, David Ross, Holly Solomon, Allan Stone, Ann Temkin, and Marcia Tucker.

Our exhibitions are accompanied by programming that encourages appreciation of art and its role in society. Our layered approach is tailored to make our exhibitions meaningful, accessible, and enjoyable for diverse audiences of every age and background and always offer opportunities for visitors to connect with art, and each other through an exploration of ideas.

## Board Of Trustees

### Chair

Rose-Marie Fox

### Vice Chair

Barbara Linarducci\*

### Secretary

Emily McDermott

### Treasurer

Grace Tang

### Board Members

Mark Carta

William Hilson

Stephanie Joyce

Joseph J. Kais

Michelle Loh

Svetlin Tchakarov

Dmitri Wright

### Honorary Board

Cynthia Guest

Sally Sheehy

Leonard Tow

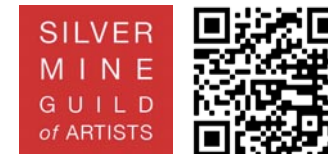
Diana Wege

### Guild Co-Chairs

Roger Mudre\*

Jon Puzzuoli

\* Ex-Officio



## Gallery Staff

### Gallery Director

Roger Mudre

[roger@silvermineart.org](mailto:roger@silvermineart.org)

203.966.9700 x26

### Gallery Assistant

Megan Jackson

[sacgallery@silvermineart.org](mailto:sacgallery@silvermineart.org)

203.966.9700 x20

### Gallery Assistant

Danny Bronson

[gallery2@silvermineart.org](mailto:gallery2@silvermineart.org)

203.966.9700 x28





# Silvermine

Silvermine Arts Center 1037 Silvermine Road New Canaan, CT 06840  
[www.silvermineart.org](http://www.silvermineart.org)