



Silvermine

New  
Members  
2022

January 22 - February 25

## **New Members Exhibit**

January 22 - February 25

Silvermine Arts Center welcomes 22 new members into its historic Guild of Artists, with this exhibition presenting innovative work in a variety of mediums and styles.

Silvermine has been a place for artists to gather since 1906 when visionary sculptor Solon Borglum moved to the area and held annual exhibitions in his studio. He created weekly artist-critiques called the Knockers Club. Formed in 1922, The Silvermine Guild of Artists was incorporated in 1924 as a not-for-profit to provide a permanent and supportive community of artists. Guild members represent artists that have a high level of accomplishment and are selected through a jurying process. Since that time, Guild membership has grown to over 300 nationally and internationally exhibiting artists. Membership has included such renowned artists as Abe Ajay, James Daugherty, Carlus Dyer, James Flora, James Grashow, Robert Kaupelis, Alice Neel, Gabor Peterdi, Charles Reiffel, James Rosenquist and honorary member Faith Ringgold.

Since its inception, guild membership has been a selective peer jurying process. As a result, the guild has held its membership to high standards with many members having work represented in permanent collections of some of the world's most prestigious museums, as well as prominent private and corporate collections. This exhibition offers visitors an opportunity to engage with the newest members of this dynamic community of professional artists and learn about their works.

## New Members 2022

Tom Atwood – Stamford, CT

Sarah Balcombe – Greenwich, CT

Christina Baril – Bradenton, FL

Eoin Burke – New Haven, CT

Cynthia Cooper – Farmington, CT

Julia Dixon – North Adams, MA

Jessica Dowling – Norwalk, CT

Almudena Fernandez Vicens – Riverside, CT

Katy Ferrarone – Waccabuc, NY

Michael Frechette – Philadelphia, PA

Carla Goldberg – Milford, CT

Mary Janacek – Fairfield, CT

Stephen Klema – Winstead, CT

Linda Kourkoulis – Larchmont, NY

Suzanne Levy – West Hartford, CT

Megan Marden – Danbury, CT

Tom Matt – Long Island City, NY

Barbara Shapiro – Scarsdale, NY

Keith Thomson – Mountain Brook, AL

Betty Vera – North Adams, MA

Brian Whelan – Wilton, CT

Marc Zaref – Norwalk, CT

Tom Atwood

Stamford, CT



*Randal Kleiser*

*Director of Grease, Grandview U.S.A., Big*

*Top Pee-wee, The Blue Lagoon*

*Los Angeles, CA*

archival inkjet print on metal, 16 x 24 inches, \$700.

Tom Atwood

Stamford, CT



*Mother Flawless Sabrina*

*Transgender performer*

*New York, NY*

archival pigment print, 18 x 26 inches, \$900.

Sarah Balcombe

Greenwich, CT



*Candy Coast*

oil, acrylic, charcoal on canvas, 36 x 36 x 1.5 inches, \$2,100.

Sarah Balcombe

Greenwich, CT



*Salt Air*

oil, acrylic, charcoal on canvas, 36 x 18 x 1.5 inches, \$2,100.

Christina Baril

Bradenton, FL



*Mind Dwelling #1*

stoneware, luster, 13 x 8 x 7 inches, \$1,500.

Christina Baril

Bradenton, FL



*Mind Dwelling #2*

stoneware, luster, 13 x 8 x 7 inches, \$1,500.

Christina Baril

Bradenton, FL



*Mind Dwelling #3*

stoneware, luster 14 x 5 x 6 inches, \$1,500.

Eoin Burke

New Haven, CT



*Forgiveness*

PA12 nylon plastic, 10.13 x 5.8 x 1.5 inches, \$700.

Eoin Burke  
New Haven, CT



*Discernment*

PA12 nylon plastic, 11.55 x 4.48 x 1.48 inches, \$700.

Eoin Burke  
New Haven, CT



*Hospitality*

PA12 nylon, 11.43 x 6.5 x 1.57 inches, \$700.

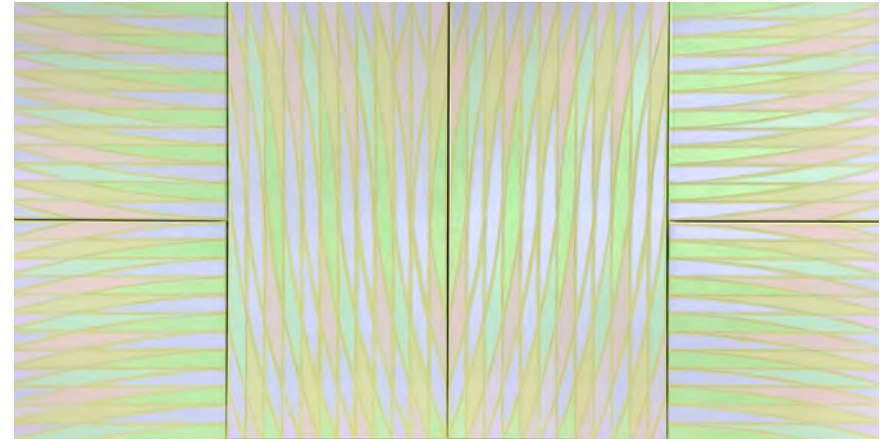


Cynthia Cooper  
Farmington, CT



*Analytical Distance*  
acrylic on canvas, 10 x 10 x .75 inches, \$150.

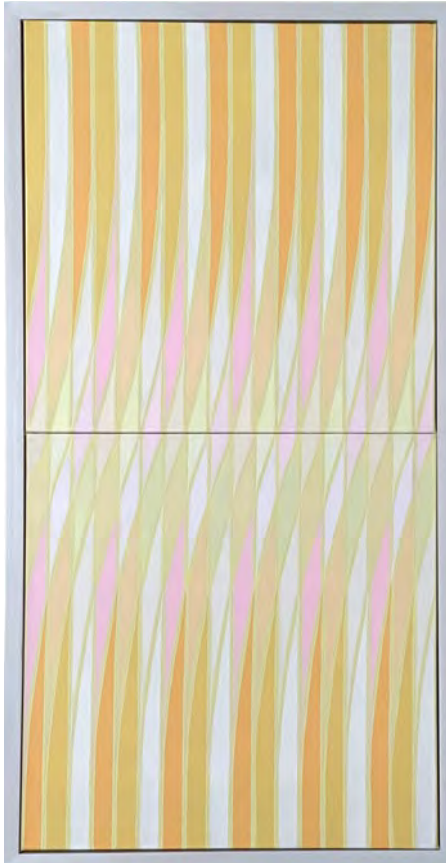
Cynthia Cooper  
Farmington, CT



*Lemon Lime Recantation*  
acrylic on canvas, 24 x 48 x 1.5 inches, \$2,450.

Cynthia Cooper

Farmington, CT



*Appropriate Sense of Space*  
acrylic on canvas, 36 x 18 x 1.5 inches, \$1,250.

Julia Dixon

North Adams, MA



*Three Seasons Study*  
watercolor on paper, 9 x 6 inches, \$400.

Julia Dixon  
North Adams, MA



*Sunflower Study with Peach, Vertebrae, and Shell*  
oil on paper, 14 x 11 inches, \$700.

Julia Dixon  
North Adams, MA



*Skull Study with Coin, Crystal, and Zinnia*  
oil on paper, 11 x 14 inches, \$700.

Jessica Dowling

Norwalk, CT



*Sense*

acrylic, cut paper, 14 x 11 inches, \$225.

Jessica Dowling

Norwalk, CT



*Aspect*

acrylic, cut paper, 10 x 8 inches, \$175.

Jessica Dowling

Norwalk, CT



*Brothers 2*

acrylic, cut paper, 10 x 8 inches, \$175.

Jessica Dowling

Norwalk, CT

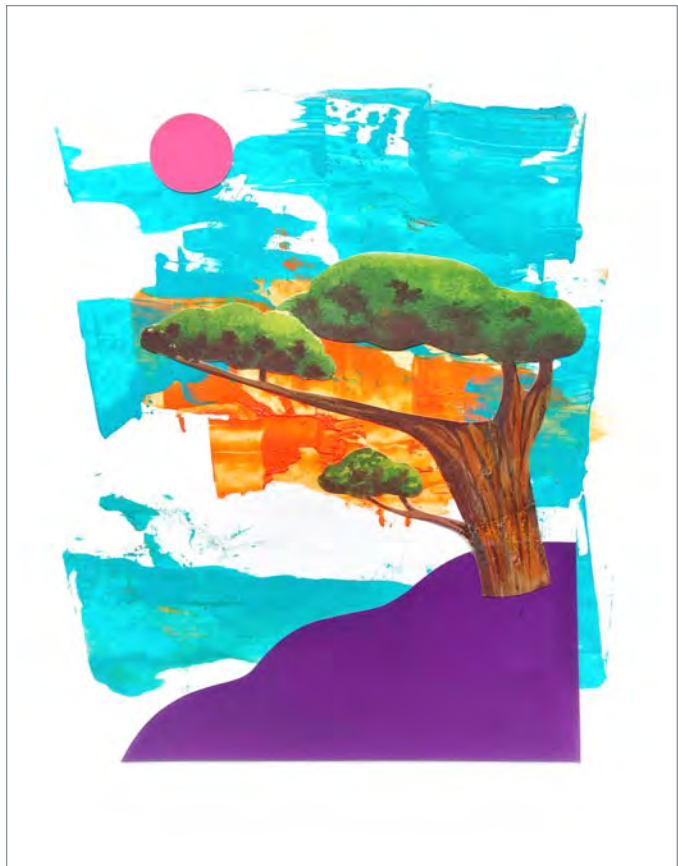


*Brothers 1*

acrylic, cut paper, 10 x 8 inches, \$175.

Jessica Dowling

Norwalk, CT

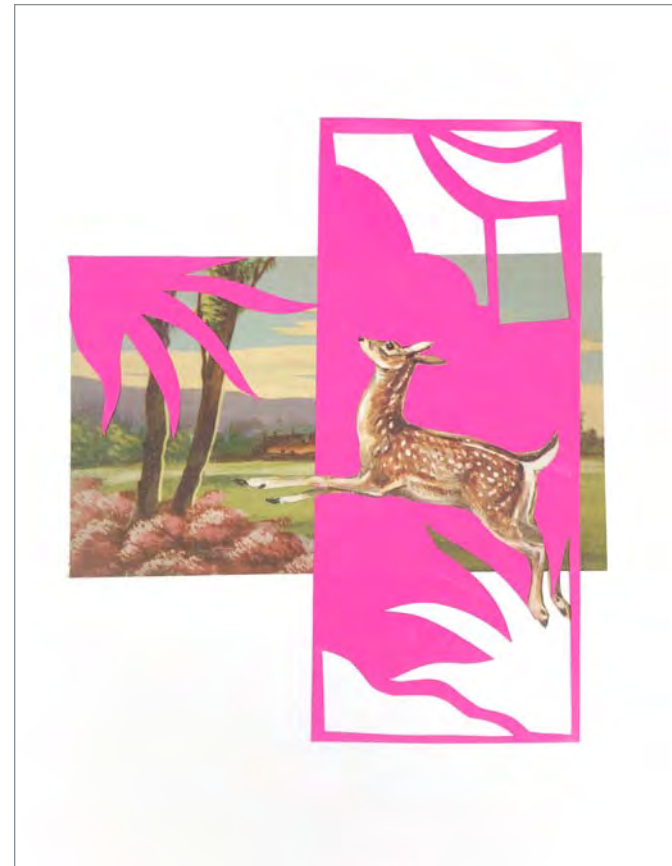


*Vista 1*

acrylic, cut paper, 10 x 8 inches, \$175.

Jessica Dowling

Norwalk, CT



*Leap*

acrylic, cut paper, 10 x 8 inches, \$175.

Almudena Fernandez Vicens

Riverside, CT

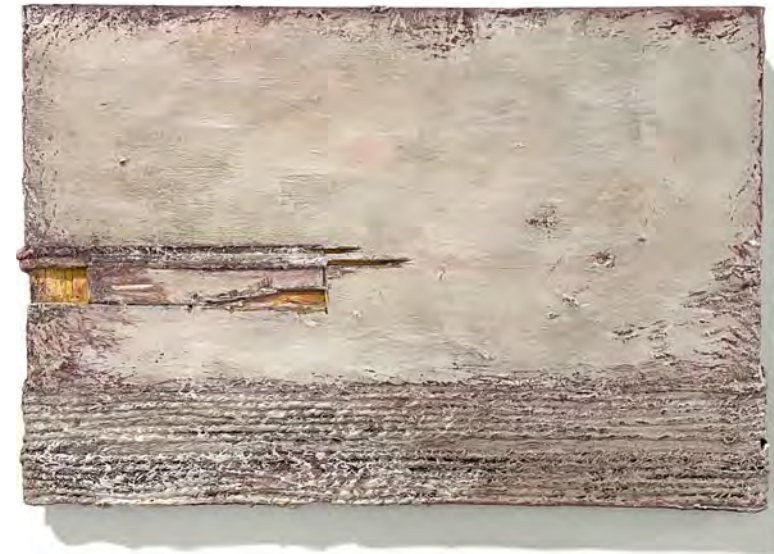


*Evolution*

acrylic, natural fiber, crayon on plywood, 35 x 24 inches, \$2,000.

Almudena Fernandez Vicens

Riverside, CT



*Breaking Ground*

acrylic, natural fiber, crayon on plywood, 8.75 x 12 inches, \$500.

Almudena Fernandez Vicens

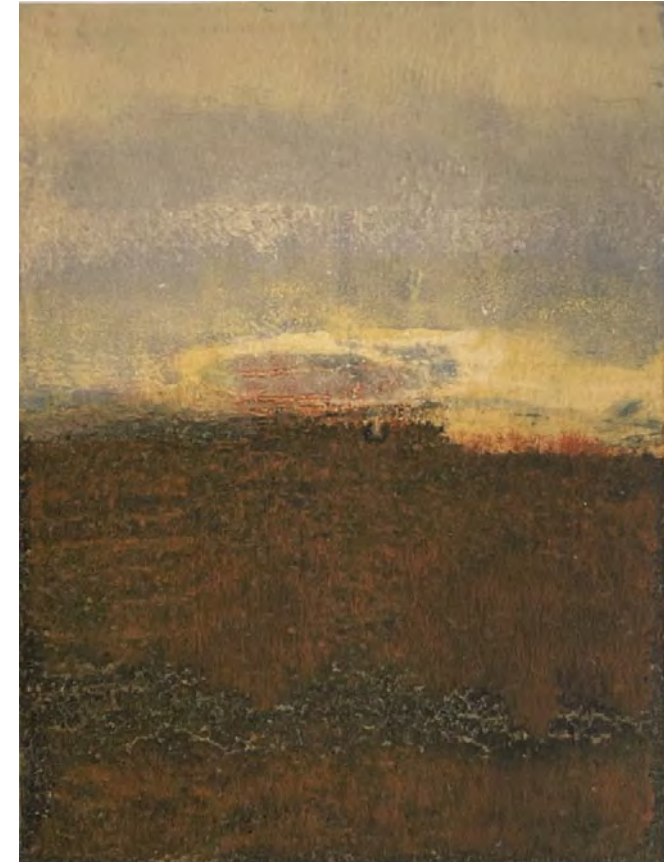
Riverside, CT



*Ephemeral Architecture*  
monotype, 8 x 6 inches, \$700.

Almudena Fernandez Vicens

Riverside, CT



*At the End of the Day*  
monotype, 8 x 6 inches, \$700.



Katy Ferrarone

Waccabuc, NY



*Whole Hold*

acrylic, ink on canvas, 36 x 72 inches, \$6,500.

Katy Ferrarone

Waccabuc, NY



*Valentine I*

acrylic, ink on clayboard, 12 x 12 inches, \$1,400.

Katy Ferrarone

Waccabuc, NY



*Valentine II*

acrylic, ink on clayboard, 12 x 12 inches, \$1,400.

Katy Ferrarone

Waccabuc, NY



*Valentine III*

acrylic, ink on clayboard, 12 x 12 inches, \$1,400.

Michael Frechette

Philadelphia, PA



*Stupid Lucky*  
oil on panel, 24 x 22 inches, \$4,000.

Michael Frechette

Philadelphia, PA



*Looking at Pasture from the Ravine*  
oil on panel, 24 x 22 inches, \$4,000.

Michael Frechette

Philadelphia, PA



*MarkE*

oil on panel, 22 x 25 inches, \$4,000

Carla Goldberg

Milford, CT



*Cross Beach County Mayo*

oil ink, enamel, resin on acrylic panels, 20 x 20 x 1 inches, \$1,800.

Carla Goldberg

Milford, CT



*Blue Lagoon Iceland*

oil ink, enamel, resin on acrylic panels, 48 x 24 x 1 inches, \$4,000.

Carla Goldberg

Milford, CT



*Pigeon Point Beach*

oil ink, enamel, resin on acrylic panels, 48 x 24 x 1 inches, \$4,000.

Mary Janacek

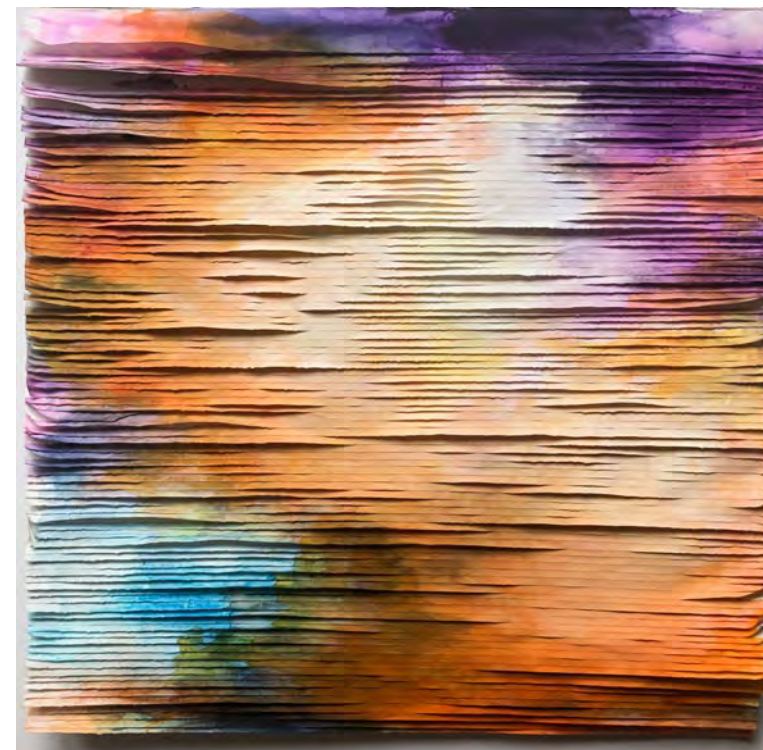
Fairfield, CT



*The Thirty-first of May Two Thousand Twenty in Washington D.C.*  
watercolor, torn paper, paste, 18 x 18 inches, \$900.

Mary Janacek

Fairfield, CT



*The Thirty-first of May Two Thousand and Twenty Fort Worth II*  
watercolor, torn paper, paste, 18 x 18 inches, \$900.

Mary Janacek  
Fairfield, CT



*Current 1*  
air-dry porcelain, watercolor, acrylic on panel, 10 x 8 inches, \$400.

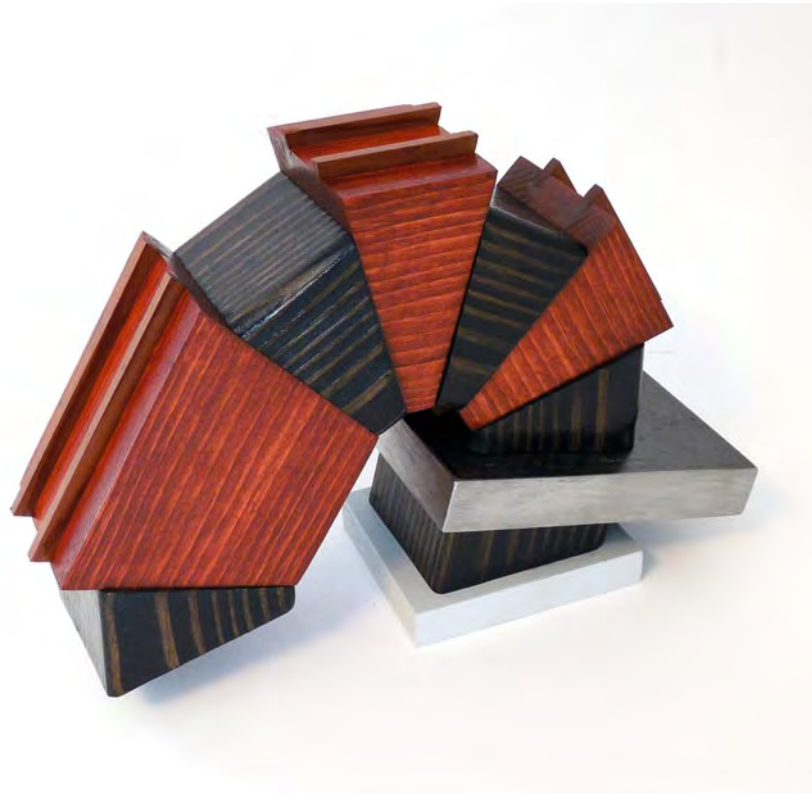
Mary Janacek  
Fairfield, CT



*Current 2*  
air-dry porcelain, watercolor, acrylic on panel, 10 x 8 inches, \$400.

Stephen Klema

Winstead, CT



*Pandora's Box 2*  
wood, 9 x 12 x 5 inches, \$2,000.

Stephen Klema

Winstead, CT

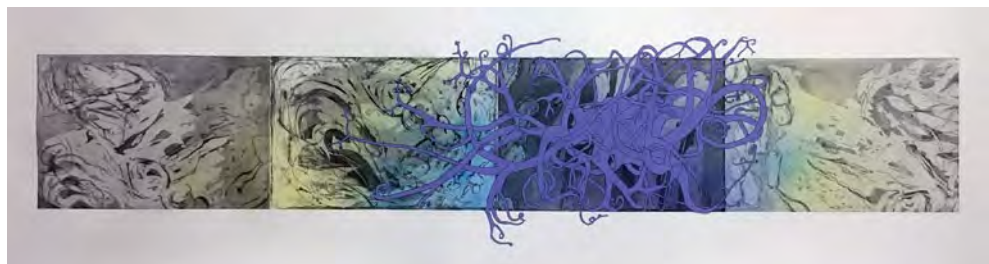


*Pandora's Box 8*  
wood, 75 x 24 x 24 inches, \$3,500.



Linda Kourkoulis

Larchmont, NY



*Seascape*

monoprint: etching, silkscreen, 15 x 72 inches, \$3,500.

Linda Kourkoulis

Larchmont, NY



*Untitled*

etching, silkscreen, edition of 3, 22 x 15 inches, \$950.

Suzanne Levy  
West Hartford, CT



*Trees: Midnight on White*  
acrylic on canvas, 48 x 60 inches, \$5,000.

Suzanne Levy  
West Hartford, CT



*Trees: Gold on Grey*  
acrylic on canvas, 30 x 40 inches, \$2,000.

Megan Marden

Danbury, CT



*Carol Street*

oil on linen, mounted to board, 4 x 6 inches, \$600.

Megan Marden

Danbury, CT



*Marginalia*

oil on linen, mounted to board, 11 x 14 inches, \$900.

Megan Marden

Danbury, CT



*Pomegranate Tree*  
oil on board, 6 x 4 inches, \$650.

Megan Marden

Danbury, CT



*Summer View From Back Window*  
oil on linen mounted on board, 6 x 6 inches, \$650.

Megan Marden

Danbury, CT



*The Unicorn is Killed*  
oil on board, 5 x 7 inches, \$650.

Megan Marden

Danbury, CT



*White Street From White Hall*  
oil on board, 4 x 6 inches, \$650.

Tom Matt  
Long Island City, NY



*Still Life with Childhood Drawing (1970: Journey)*  
oil on linen, 30 x 24 x 1.5 inches, \$6,000.

Tom Matt  
Long Island City, NY



*Still Life with Childhood Drawing (1971: Anxiety)*  
oil on linen, 18 x 24 x 1 inches, \$3,800.

Tom Matt  
Long Island City, NY



*Still Life with Childhood Drawing (1970: Monster)*  
oil on linen, 40 x 30 x 1 inches, \$8,000.

Barbara Shapiro  
Scarsdale, NY



*Twyla Tharp*  
monotype on mylar, 19 x 33 inches, \$1,450.

Barbara Shapiro

Scarsdale, NY



*Power*

India ink, watercolor pencils on mylar, 22 x 25 inches, \$750.

Barbara Shapiro

Scarsdale, NY



*Mystery*

collaged work on paper, 22 x 25 inches, \$1,450.



Keith Thomson  
Mountain Brook, AL



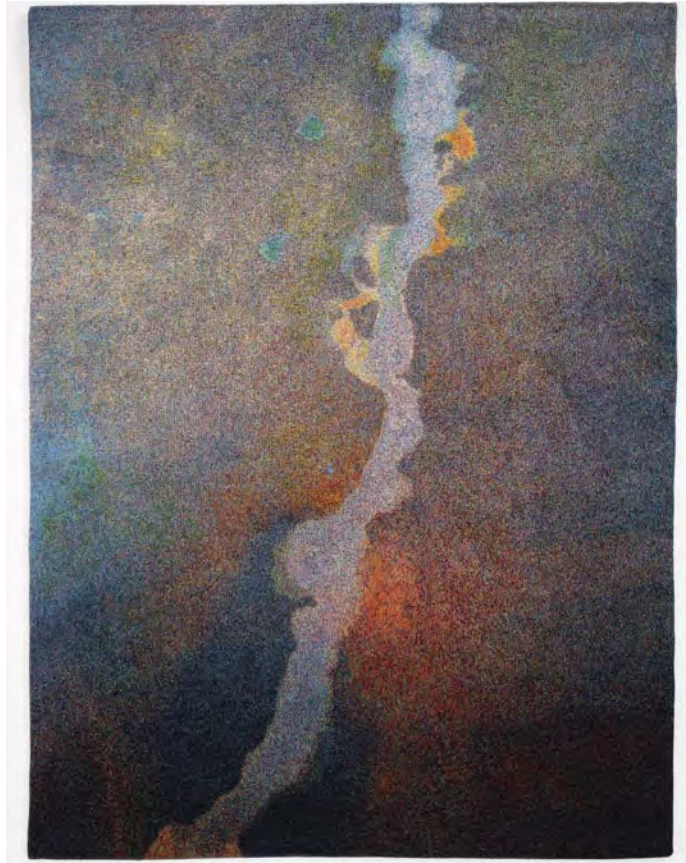
*Leftist*  
digital sketch, oil on canvas, 36 x 24 inches, \$1,100.

Keith Thomson  
Mountain Brook, AL



*How to Get to Sesame Street*  
digital sketch, oil on canvas, 18 x 24 inches, \$700.

Betty Vera  
North Adams, MA



*Caustic*  
Jacquard tapestry, hand colored, 65.5 x 49 x .75 inches, \$10,000.

Betty Vera  
North Adams, MA



*Studio 7*  
Jacquard tapestry, hand embroidered, 63.75 x 46.75 x .75 inches, \$10,000.

Brian Whelan  
Wilton, CT



*Flotsam Jetsam*  
acrylics, tin foil, varnish on board, 48 x 36 x 2 inches, \$8,400.

Brian Whelan  
Wilton, CT



*It's All in the Mind - The Psychiatrist*  
acrylics, tin foil, varnish on board, 40 x 30 x 2 inches, \$7,000.

Marc Zaref  
Norwalk, CT



*Book Board Boogie-Woogie*  
book boards, binder's tape, mounted on panels, 153 x 90 x 1.5 inches  
\$15,000. (as shown), \$5,000.-\$20,000 (site specific installations)

Marc Zaref  
Norwalk, CT



*Opera Series II*  
welded steel, enamel, 28 x 28 x 11 inches, \$3,200.

## Silvermine Guild of Artists

Silvermine has been a place for artists to gather since 1906 when visionary sculptor Solon Borglum moved to the area and held annual exhibitions in his studio. He created weekly artist-critiques called the Knockers Club. Formed in 1922, The Silvermine Guild of Artists was incorporated in 1924 as a not-for-profit to provide a permanent and supportive community of artists. Guild members represent artists that have a high level of accomplishment and are selected through a jurying process.

Silvermine Guild of Artists has been a hub for some of the most talented artists in the Northeast. Guild membership has grown to almost 300 artist members nationwide, and has included such renowned artists as Abe Ajay, James Daugherty, Carlus Dyer, James Flora, James Grashow, Robert Kaupelis, Alice Neel, Gabor Peterdi, Charles Reiffel, James Rosenquist and honorary member Faith Ringgold.

Since its inception, guild membership has been a selective peer jurying process. As a result, the guild has held its membership to high standards with many members having work represented in permanent collections of some of the world's most prestigious museums, as well as prominent private and corporate collections.

## Silvermine Galleries

Silvermine Galleries represents the Silvermine Guild of Artists. Our Galleries have exhibited art luminaries including Joseph Albers, Gabor Peterdi, Milton Avery, Elaine deKooning, Clement Greenberg, Alice Neel, Louise Nevelson, Larry Rivers, Christo and Jeanne-Claude, Faith Ringold, James Rosenquist, Chuck Close, Philip Johnson, and many others.

The Galleries continue to expand on our heritage through compelling exhibitions of art by emerging and internationally recognized artists. A distinguished list of curators have juried many of our landmark exhibitions, among them are Dore Ashton, Milton Avery, Bill Carroll, Tom Eccles, Andre Emmerich, Jennifer Farrell, Henry Geldzahler, Patricia Hickson, Hilton Kramer, Beth McLaughlin, Barbara O'Brien, David Ross, Holly Solomon, Allan Stone, Ann Temkin, and Marcia Tucker.

Our exhibitions are accompanied by programming that encourages appreciation of art and its role in society. Our layered approach is tailored to make our exhibitions meaningful, accessible, and enjoyable for diverse audiences of every age and background and always offer opportunities for visitors to connect with art, and each other through an exploration of ideas.

## Board Of Trustees

### Chair

Rose-Marie Fox

### Vice Chair

Barbara Linarducci\*

### Secretary

Emily McDermott

### Treasurer

Grace Tang

### Board Members

Mark Carta

William Hilson

Stephanie Joyce

Joseph J. Kais

Michelle Loh

Svetlin Tchakarov

Dmitri Wright

### Guild Co-Chairs

Roger Mudre\*

Jon Puzzuoli

\* Ex-Officio

### Honorary Board

Cynthia Guest

Sally Sheehy

Leonard Tow

Diana Wege



## Gallery Staff

### Gallery Director

Roger Mudre

[roger@silvermineart.org](mailto:roger@silvermineart.org)

203.966.9700 x26

### Gallery Assistant

Megan Jackson

[sacgallery@silvermineart.org](mailto:sacgallery@silvermineart.org)

203.966.9700 x20

### Gallery Assistant

Danny Bronson

[gallery2@silvermineart.org](mailto:gallery2@silvermineart.org)

203.966.9700 x28



# Silvermine

Silvermine Arts Center 1037 Silvermine Road New Canaan, CT 06840  
[www.silvermineart.org](http://www.silvermineart.org)