

Silvermine Arts Center

Annual Report

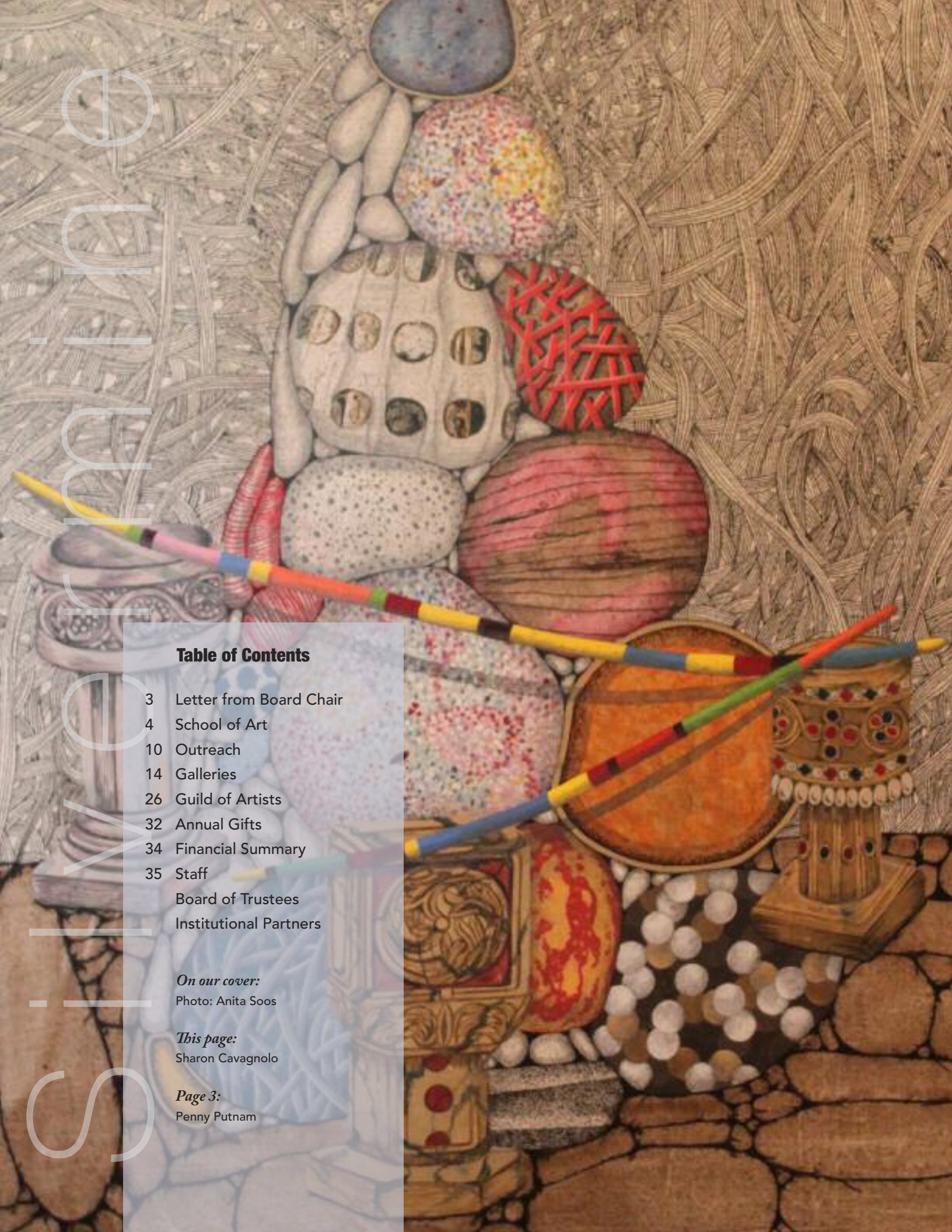


Table of Contents

3	Letter from Board Chair
4	School of Art
10	Outreach
14	Galleries
26	Guild of Artists
32	Annual Gifts
34	Financial Summary
35	Staff
	Board of Trustees
	Institutional Partners

On our cover:
Photo: Anita Soos

This page:
Sharon Cavagnolo

Page 3:
Penny Putnam

Letter from CEO



It's been over a year since the COVID-19 pandemic changed the world and all of our lives. One thing that didn't change was Silvermine's commitment to meet the needs of our community. We have been and continue to be put to the test as we navigate through this pandemic, which threatens so much of what we hold dear. I am immensely proud of our Silvermine team for supporting each other and constantly pivoting and innovating to stay relevant and accessible for the community we serve.

We're still here for you and we're looking forward to a brighter future as we expand and improve our programs and services.

From the very beginning of the pandemic, our focus was squarely upon two things:

- Securing the well-being, health and safety of our staff, instructors, and students and
- Steering the organization successfully through this unprecedented crisis.

I am proud to report that we achieved both.

From the time we re-opened in June 2020, Silvermine has been there for the community. Thanks to

many of our esteemed instructors, we conducted over 700 classes for 2100 students during the pandemic. We held 10 exhibitions and sold \$66,000 in art through our website and artnet platforms. In addition, our outreach programs ran virtually and still reached over 1300 under-resourced youth.

Despite all of the challenges, we extended our Silvermine community, regionally, and globally, engaging with over 120,000 visitors through our website and social media platforms.

Next year we celebrate 100 years of providing exceptional arts education and appreciation opportunities to our community. We remain steadfast in our mission to: promote and showcase artists, provide outstanding arts education for our students, and inspire a local culture of creative and innovative thinkers. We look forward to

a future that will emphasize a renewed commitment to our community, deepening and expanding Silvermine's reach outside our campus, and sharing our storied institutional history.

2020 was anything but easy. The only way to get through such a year was

by working together as a team. I would like to extend my heartfelt thanks to the instructors, students, and staff who kept us operating. They have demonstrated resilience and shown great commitment in these extraordinary times.

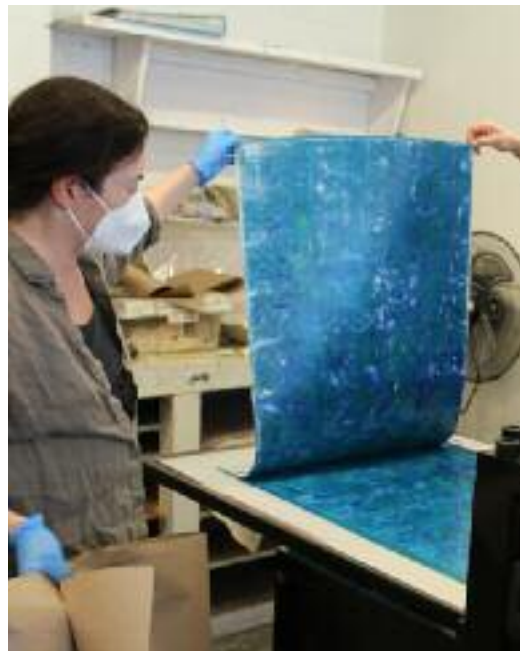
I would also like to thank all of our donors for the trust you have placed in us. I recognize there are many deserving organizations that could have used your support and I am extremely honored you chose to support ours!

Thank you to all for standing by Silvermine now and always; we greatly appreciate your generosity, your partnership, and your continued friendship.

With sincere gratitude,

Barbara Linarducci
Chief Executive Officer

Silvermine school of art



Take a class. Paint, draw, sculpt, weld. Silvermine. Where art cultivates Life.

Silvermine School of Art continued its legacy of award winning art education despite the uncertainties and restrictions caused by the ongoing covid pandemic. It was paramount that we stay connected and accessible to our community because we know that Art sparks creativity, heals the spirit, and brings us together.



We held over 700 classes, both online and in-person, with more than 3700 enrollments serving students of all ages, experience and proficiency. We navigated through the year continually adapting and innovating to our changing reality.

The 2021 summer session marked Silvermine's second full summer of classes since the onset of the pandemic. Our Summer Art Studios offered youth an opportunity for safe and enriching in-person classes while still providing online learning options. A dynamic array of 106 camps were offered in a variety of disciplines. Our programs reached almost 95% capacity, a significant increase over the previous summer.

Inclusivity is paramount to Silvermine. In an effort to provide access to the arts for families living in under-resourced communities,



Silvermine awarded 11 scholarships to deserving youth ages 4 to 14. Limited financial resources should not prevent the desire to learn and we thank our generous donors for their support.

The School of Art has played a major role in the Center's growth from the earliest days. Today, it is bustling with creative activity year-round in its 15 studio classrooms specializing in painting, printmaking, sculpting, ceramics, metalworking and foundry,



glasswork, jewelry making, woodworking, Ikebana, photography and digital lab. Classes are small with emphasis on individual development. It is an environment where every

student can find a place for personal growth.

As the preeminent visual arts destination in Fairfield County, what attracts and keeps students coming to Silvermine are the distinguished group of professional artist educators and the widest range of disciplines in the area.

There is nothing else like it.

summer camps



**Summer Camp
as it should be –
fun, exciting,
a chance to learn
something new
and make
new friends!**



June 2021 marked Silvermine's second summer season since the onset of the pandemic, welcoming almost 900 children to our campus – a huge success!

Summer Art Studios encourage experimentation, creative thinking and skill development in a safe, fun, supportive and socially engaging environment with other creative youth. Age-specific programs are led by our professional Teaching Artists, with classes specifically designed to ensure personalized attention.



Over 100 programs were offered over a ten-week period for youth ages 4 - 17 in a variety of disciplines including, painting & drawing, ceramics, sculpture, woodworking, digital arts, mixed media and specials topics such as puppetry, papermaking and calligraphy. New this year we introduced a free and supervised lunch period for full-day campers



called "Lunch Bunch", in which students participated in unstructured art making and engaged in games.

Silvermine provides a unique opportunity for students of all ages and experience levels wishing to explore the visual arts.



summer camps



With paint, clay, paper, and willing hands, we're building bridges one step at a time.

Art Partners

Art Partners programs strive to close Connecticut's educational achievement gap – one of the largest in the nation – by providing access to the arts through uniquely designed programs that target critical student needs. We continued our work with community



partners during the pandemic to bring curriculum-based enrichment to over 1,300 students in under-resourced schools throughout Fairfield County. Implementing our programs in remote, hybrid and in-person formats, we further encouraged literacy through poetry and art while reinforcing healthy social and emotional learning. Building on the concept that art transcends race, language, and socio-economic status; our programs create a level playing field leading a pathway to success.

Highlights from this year:

- With a grant from the Cornelia T. Bailey Foundation, Art Partners expanded its reach into Bridgeport. Wilbur Cross Elementary second graders explored the poetic form of Hay(na)ku while studying anecdotes regarding the animals



of the East African savannah and grasslands. The "Jungle Jams" program encouraged students to translate their knowledge into poetry and creative mixed media artworks.

- Inspired by their vivid imaginations, Wilbur Cross second graders also built their "dream spaces" utilizing engineering, architecture, and design concepts to create personal, tabletop treehouses. The "Spring Fling" program established a healthy learning environment incorporating both haiku poetry and sculpture, allowing students to take chances and achieve personal goals.



- CMS students returned to Norwalk's Fodor Farm, an historic agricultural landmark, collaborating on larger-than-life sculptures for their annual

public installation in the sustainable gardens. To compensate for the interruptions of the pandemic, first and second graders joined on the 2021 project. Remote and in-person learners worked in an impressive collaboration, and artwork from those learning at home was incorporated into the sculptures. Students gained knowledge of gardening, farming, and the

Left page, clockwise from top: CMS at Norwalk's Fodor Farm

This page: Silvermine Elementary School's mandala mural; Wilbur Cross's 'Dream Spaces'; Silvermine Elementary School's 'Mandala Mural';



environment while melding science curriculum and the hands-on work of sculpture and painting.

- Silvermine Elementary, a Dual Language Magnet School and a lead SEL (social-emotional learning) school, did not skip a beat, despite the challenges of the pandemic. While studying symmetry, geometry, and the meditative qualities of art, the proud fifth grade students completed their project by creating individual, unique



mandalas, installed as a single mural. The mural is a parting gift to the school and a legacy that remains as the students move on.

- In "Me, Myself and Eye", both Bridgeport and Norwalk students wrote self-reflective poems, studied the proportions of the head and the anatomy of the eye while learning algebra to mix unique skin tones, resulting in impressive self-portraits.



ArtAcademy

In partnership with STAR, Inc., Silvermine continued its 'ArtAcademy' Program to benefit people with disabilities. ArtAcademy taps into the transformative power of art for adults with intellectual and developmental disabilities by engaging them in a variety of art classes in an inclusive setting on Silvermine's campus as well as through remote 'Zoom' lessons. The Zoom platform has proven particularly successful because of how many students can be reached. The weekly class is streamed into STAR headquarters, as well as other STAR living facilities and private homes. This program was made possible by generous contributions from the Horizon Foundation and the Sidney Weiner Memorial Scholarship Fund.



Left page: Silvermine Elementary School's 'Mandala Mural'

This page, clockwise from top: Wilbur Cross Elementary's 'Jungle Jams'; Silvermine Elementary School's 'Me, Myself and Eye'; ArtAcademy; Silvermine Elementary School's 'Me, Myself and Eye'; Wilbur Cross's 'Dream Spaces'





Galleries

Khanh Le

galleries

One trip to Silvermine will lead to another and another since our exhibitions are always changing.

The Galleries present relevant, visually compelling art exhibitions, accompanied by programs and events, to heighten appreciation and understanding of art and its role in society. Our inclusive approach encompasses programming tailored to make our exhibitions meaningful and accessible to diverse audiences of every age and background. Distinguished guest curators jury many of our landmark exhibitions. All of our installations use art to create opportunities for learning and provide a venue for broadening participation across media, disciplines, cultures and contexts.

On the following pages, we proudly display selected highlights from each of these exhibitions. We invite you to walk through and enjoy this wide array of talent!

Silvermine Galleries entered the global art market by subscribing



to the online service Artnet. With 2.1 million monthly users from over 239 countries, it is the largest gallery network of its kind. Artnet draws a broad audience generating inquiries from both serious collectors and first-time buyers. Silvermine Galleries has already made sales through this online channel.

Our accomplishments of this past year have highlighted Silvermine's resilience and perseverance in a trying time for our community. We have and will continue to work towards the larger goal of supporting and cultivating a passionate and talented community of artists while keeping everyone in that community, and beyond, safe and healthy.



Highlights of this year:

'Summer Salon' Guild Exhibition
July 21 – August 20, 2020

70th A-ONE
September 5 – October 16, 2020

The Golden Door
October 31, 2020 –
January 16, 2021

New Members Exhibition
February 6 – March 13, 2021

A-ONE Solo Exhibition
'Divine Frequent See' -
Russell Ritell
March 27 – April 23, 2021

Paint 2021
May 8 - June 30, 2021

View the exhibitions on our
Gallery page at:

www.silvermineart.org/galleries/

Galleries



summer salon

'Summer Salon' Guild Exhibition

July 21 – August 20, 2020

Featuring an impressive group of more than 80 members of the Silvermine Guild of Artists working in a broad range of styles and mediums, 'Summer Salon' celebrated our extraordinarily accomplished painters, sculptors, printmakers, collage and mixed media artists. Curated by Roger Mudre, Silvermine Gallery Director.

Artists clockwise from left:

This page:

Robert Meyer, Meg Tweedy

Right page:

Lynn Mara, Pam Ackley,
Helen Cantrell, Judith Orseck Katz

View the online exhibition at
<https://www.silvermineart.org/galleries/>



70th A-ONE

September 5 – October 16, 2020

One of the oldest and most prestigious juried competitions, A-ONE highlights the diversity of work that is currently being made by both established and emerging artists. A-ONE spotlights contemporary trends and new explorations across various media. Curated by Barbara O'Brien, Independent Curator and Critic.

'Divine Frequent See' – Russell Ritell

March 27-April 23, 2021

Ritell's work garnered the Board Chair Grand Prize award at Silvermine's 69th annual A-ONE in 2019, and this solo exhibition is a result of that honor. Ritell paints contemporary scenes with dramatic illumination that recalls the classical tenebrist painters.

Artists clockwise from left:

This page:

Patricia Carrigan

Right page:

Jaymee Harvey, Tian Hui

Barbara Simcoe, Russell Rittel

View the online exhibition at
<https://www.silvermineart.org/galleries/>

70th A-ONE





Galleries



Artists clockwise from left:

This page:

Donna Namnoun, Connie Brown,

Right page top:

Nancy Natale, Joseph Fucigna, Dana

Kotler, Donna Namnoun,

Right page bottom:

Nina Temple, June Ahrens

View the online exhibition at
<https://www.silvermineart.org/galleries/>





Artists clockwise from left:

This page:

Susan Clinard

Right page:

Susan Clinard, Taro Takizawa,
Rick Shaefer



The Golden Door

October 21, 2020 – January 16, 2021

This major exhibition of contemporary art explored the American experience of immigration, migration and the American Dream and examined the complex histories and cultural identities that defined and enriched contemporary America. Curated by Robin Jaffee Frank, Ph.D, Independent Curator, Barbara O'Brien, Independent Curator and Critic and Roger Mudre, Silvermine Gallery Director.

View the online exhibition at

<https://www.silvermineart.org/galleries/>

The Golden Door





Paint 2021

Paint 2021

May 8-June 30, 2020

An exhibition of international artists employ paint as an integral part of their work. Vitality, diversity, skillful execution, experimentation, and new directions were its distinguishing elements. Curated by Michelle Y. Loh, New York based art advisor, gallery director, and curator.

Artists clockwise from left:

This page:

Jovanni Luna

Right page:

Sarah Lightfoot Brundage, Jennifer McCandless, Chunbum Park, Barry Katz

View the online exhibition at
<https://www.silvermineart.org/galleries/>

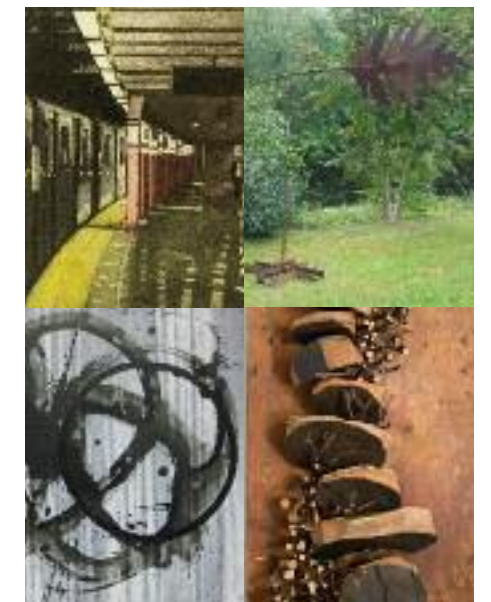


guild of artists

In Memoriam

Linda Adato
Dan Bergfeld
Kioshi Otsuka
Joe Saccio

Sadly, each year we lose some of our cherished artists. This year, we honor four long-time members who made a lasting impression in and to our community. Their work, shown below, highlights the many talents of our Guild Artists.



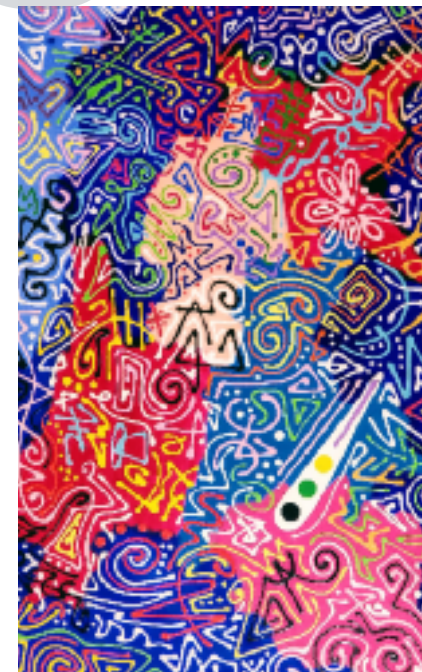
Artists left to right:

Top row: Linda Adato, Dan Bergfeld
Bottom row: Kiyoshi Otsuka, Joe Saccio

Clement Greenberg, Louise Nevelson, Larry Rivers, Jeanne-Claude and Christo, James Rosenquist, Chuck Close, Philip Johnson—and the list goes on.

Today, the Guild is comprised of over 300 professional artists who enhance and change the way we experience art. Widely respected and highly collectible, their multi-disciplined work can often be viewed in Gallery exhibitions. Our Guild members have attained a superior level of technical and creative accomplishment as demonstrated by numerous group and solo exhibitions, awards, publications, commercial gallery representation and inclusion in museum and corporate collections.

We continue to honor our heritage by expanding the borders of our contemporary exhibitions to include recognized emerging artists from across the United States to exhibit at Silvermine. These exhibitions highlight current art trends and broaden the community's understanding and appreciation of art by bringing some of the most influential pundits in contemporary art to Fairfield County.



Since 1906 when visionary sculptor Solon Borglum moved to Silvermine and held annual exhibitions in his studio and weekly critiques called the Knockers Club, Silvermine has been a place for artists to gather.

In 1922 The Silvermine Guild of Artists was formed and later incorporated as a not-for-profit to provide a permanency to the community of artists.

Silvermine has a 99-year reputation of exhibiting and involving art luminaries such as Joseph Albers, Gabor Peterdi, Milton Avery, Elaine deKooning,

Our mission has persisted for decades: To foster art appreciation, education, and the cultural growth of the community.

Artists clockwise from left:

This page:
Elaine Longtemps

Right page:
Alder Crocker

New Members Exhibition
February 6 – March 13, 2021
Highlighting the work of 38 new members recently juried into our dynamic artistic community of over 300 professional artists. Many of its' members have work represented in permanent collections of some of the world's most prestigious museums, as well as prominent, private and corporate collections. Curated by Roger Mudre, Silvermine Galley Director

*View the online exhibition at
<https://www.silvermineart.org/galleries/>*

New Member's Exhibiton



Guild of Artists

Artists clockwise from left:
This page:
 Heide Follin
Right page:
 Meg Bloom, Susan Fehlinger,
 Fruma Markowitz, David Ottenstein



New Member's



LIFETIME GIVING

\$500,000+
Connecticut Office of the Arts

\$200,000 - \$499,999
Rose-Marie Fox & Bill Shanahan
Hilda Kraus
Jeniam Foundation
Daniel Edward Offutt, III Private
Foundation Trust
Emily Daggy Vogel

\$100,000 - \$199,999
Barbara & William Hilson
Diana Wege Sherogan
New Canaan Community Foundation
Hearst / Hearst Foundation
Cornelia T. Bailey Foundation
The Daphne Seybolt Culpeper
Foundation
Jan & Robert Dilenschneider
Estate of Elizabeth Neuberger

Annual Giving

\$50,000+
Connecticut Office of the Arts*

\$20,000 - \$49,999
Cornelia T. Bailey Foundation
Connecticut Humanities*
Rose-Marie Fox & Bill Shanahan*
Barbara & William Hilson*
Horizon Foundation, Inc.

\$10,000 - \$19,999

Colgate-Palmolive Company*
The Daphne Seybolt Culpeper
Foundation*
Barbara Benton Davis Fund
Newman's Own Foundation*
New Canaan Community Foundation*

\$5,000 - \$9,999

Stephanie Joyce & Jim Vos*
Valerie Wagenfeld
Marilyn Clements*
F.O.R.E. Foundation for Art, Science
and Education, Inc

\$1,000 - \$4,999

June & Ron Ahrens*
Mark Carta*
Jennifer Clark
Pamela Davis*

Annual Gifts

Diana & Lyman Delano*
Katharine Draper*
Tom Dubin
Carole Eisner*
Jeanine Giddings
Stephen Jaeger*
Jessica Jamner*
Bina & Falgun Jariwala
Karen Kalkstein*
The Knapp Fund
Renee & Carl Landegger*
Laura & Roger Lavan*
Barbara Linarducci*
The George A. Long & Grace L. Long
Foundation*
Emily McDermott*
Hyewon & Jason Miller
Erin & Kevin Moore*
Karen & Gary Neems*
Mary Ellen Pastore
Laura Pflug*
Penny Putnam*
Nancy Reinker
Missy Savard*
Nomi Silverman*
Deborah & Alan Steckler
Judith Steinberg*
Grace Hui Tang*
The Waters Family
Ann Weiner*
Bonnie Voit*

\$500 - \$999

Caralyn Caldwell
Andrew Davis
Nurjehan Daya
Heide Follin
Fran Henry-Meehan & Jack Meehan*
Peter Lampke*
Lynn Mara*
The Maurice Goodman Foundation*
Karin McCormick*
Sarah Meyerhoff
Alfred Morris
Roger Mudre*
Susie & James Perakis*
Hiroko & Ronald Rawald
Laura Rollins
Susan Sommer Schweitzman*
Marcy Shinbaum
Donald Warfield*
Maxwell Wiesen*
Coke Anne & Jarvis Wilcox*

\$100 - \$499

Christine Aaron*
Pippa & David Ader
Barbara Al-Haffar

Annual Gifts

Carol & Alan Alterman*
Mark Andreas
Inez Andrucyk
Anonymous*
Caroline Bacon
Mary Bailey*
Myriam Bossuyt*
Gail Bradshaw*
Eric Brennan
Kathleen Brletic
Sylvia & Louis Broudy*
Janine Brown
Lucienne Buckner
Susan Burke
Miggs Burroughs*
Daniel Burstein
Jennifer Cadoff*
Susana Canosa
Charles Cheever, III*
Ann Chernow*
Eric Chiang*
Katherine Chott
Alberta Cifoletti*
Jennifer Clark
Laurel & Richard Cohen*
Donna Collins
Megan Collins*
Kathy Conway*
Marcia Cooper
Susan & Bruce Cruikshank*
Andrew Davis*
Carol & Joel Davis
Peggy Dembicer*
Liz & Lawrence Dexheimer*
DiMiceli Family
Laure Dunne*
David Dunlop*
Francine Even*
Shinobu Farrell
Donna Forma
Karen Frank
Sally Frank
Sophia Gevas & TC Burt, Jr.*
Nathaniel Gibbons*
Leslie Giuliani*
Hanneke Goedkoop*
Helen & William Gore*
Mindy Green*
Robert Gregson*
Rachael Grimm
Maggie Grise
John Harris*
Maryanne Hartley
Vincent Hawley
Robert Heuman
Jennifer Moné Hill
Mindy & Jay Horn*

Annual Gifts

Benice Horowitz*
Renée Hughes
Nash Hyon*
Jana Ireijo*
Irving & Aaronel deRoy Gruber
Charitable Foundation*
Deborah Jerome
Barry Katz
Renee Khatami*
Marlene Krumm-Sanders
Lisa Laible
Nancy Lasar*
Laura & Roger Lavan*
Eva Levine*
Janet Levine*
Lisa Lindstrom
Kerry Long
Peter Lopatin
David Lubarsky*
Rob Mallozzi
Ellen Mann
Mary Manning*
Fruma Markowitz
Barbara Marks*
Nancy Marx
Ellen Mason
Crista Mathew
Alex McFarlane*
David McKinnis
Nancy McTague-Stock*
Bob Miranti*
Nancy Moore*
Gwendolyn Morris
Barbara Morse-Lubell
Cynthia Mullins*
Donna Namnoum
Janice Nieman
Anonymous*
Dido Nydick
Angie O'Brien*
Rose Ogrinc*
Gregory Payne
Margaret Pederson*
Judy Pecnik*
Meg Piper
Shizue Pleasanton
Leah Poller
David Pressler*
Gwen Reiss
Marilyn Richeda*
Russ Ritell
Scott Roberts
Alison Robins
Minna Rothman
Kathleen Rozsa*
Dee & Robert Sachs*
Lucy Sallick*
Christopher Schabacker III*

Annual Gifts

Mark Schiff*
Rick Shaefer*
Barbara Shapiro
Susan Sharp*
Dr. Robert & Carol Sholler*
Mary Silberman*
Scott Simon
Anita Soos*
Susan Stillman
Eve Stockton*
George Thom*
Jere Thomson*
Marjorie Tomchuk*
Roberta Tucci
Pamela Tucker
Meg Tweedy*
Jo Ubogy*
Derek Uhlman
Anne Vanderzee
Karen Vogel*
Alison von Klemperer
Louise Washer*
Hooey Wilks
Leslie Williams*
Samantha Woodruff
Torrance York*
Janice Yost
Michael Zack
Benjamin Zelermyer*
Edward Zerdy
Audrey Zinman*
Florence Zolan*

Up to \$99
Jessica Alarcon Yopez
Barbara Al-Haffar
Aurelia & Thomas Anastasio*
Lisa Arnold
Jane Baket
Idil Barkan
Rem Bigosinski
Marie-Antoinette Boot
Suzanne Brandt
Meg Cassidy
Anthony Cohen
Lisa Colby
Lucy Dathan
Janis Davis
Charles DeLong
Elysa Demartini*
Bridgett Dibonaventura
Carol Dixon*
Tom Dubin*
Amanda Duchen*
Alanna Fagan*
Dean Fisher
Roslyn Fok
Jay Friedman

Annual Gifts

Julia Frossell
Christy Gallagher*
Katie Gallo
Jennifer Gannon
Claire Watson Garcia
Elisabeth Garner
Dave Gesualdi
Ronnie Gold*
Jaime Gorman
Diane & Hank Green
Elon Green
Lindsay Grega
Arthur Guagliumi
C.J. Guerin
Corey Hardeman
Heidi Harrington
Carol Herbig*
David Heuvelman
Julia Horowitz
Rabab Hussain
Martha Ives*
Paul Johnson
Senter Johnson
Heather Jones
Elisa Keogh
Lorraine Kiernan*
Michelle Korn
Marta Kot
Candice Krist
Lucy Krupenye*
Lisa Lake
Sharon Larsen
Kristi Lieberman
Susan Lippman*
Lori Longpre
Lorna Lyle
Wendy MacCordy
Julie Malan
Cheryl Malecki*
Creighton Mann
Mary Manning*
Deb Marcou
Jonathan Marom
Lori Marrone*
Anne Mauk
Janice Mauro
Robin McCahill
Dorette Moreo
Deborah Mrotek-Swann
Connie Nichols
Jennifer O'Connell Reid
Elizabeth Perkins
Peter Petrochko
Jennifer Price
Tracey Riccardi
Kerri Riccardo
Martha Robinson
Usana Sansej*

Annual Gifts

Cat Satterwhite
Patricia Scanlan
Deborah Schoenfeld
Amy & Stephen Schott*
Lisa Scroggins*
Rosalind Shaffer
Elyse Shapiro
Day Shields*
Lisa Silver
Susannah Silverman
Anne Sisco
Judy Stanley
Sandra Stein*
Florence Suerig*
Susan Tabachnick
Anne Veno
Wendy Vickrey
Mitchell Visoky*
Rick Watson
Daniel Weir
Christa Whitten*
Nancy Widdows
Tomira Wilcox
Marilyn Wiles-Kettenmann
Jane Xiao
Carol Zelenz

Annual Giving

Thank you for being
an important part
of Silvermine and
sharing in our vision
for the future.

Our Donors
are vital to our success
and we greatly
appreciate
your continued
support.

Silvermine

*3 Years Continual Giving

Financial Summary

Silvermine performed resiliently during FY21 with a \$52,752 Result after Depreciation – a 152% increase over FY20 results of (\$101,519). While School revenue was down 30% as compared to FY20 due to restricted capacity and limited classes, the Gallery revenue was down only 7% and equally important, Scholarships and Outreach funding remained constant, a testament to the strong relationships with our grantors and donors.

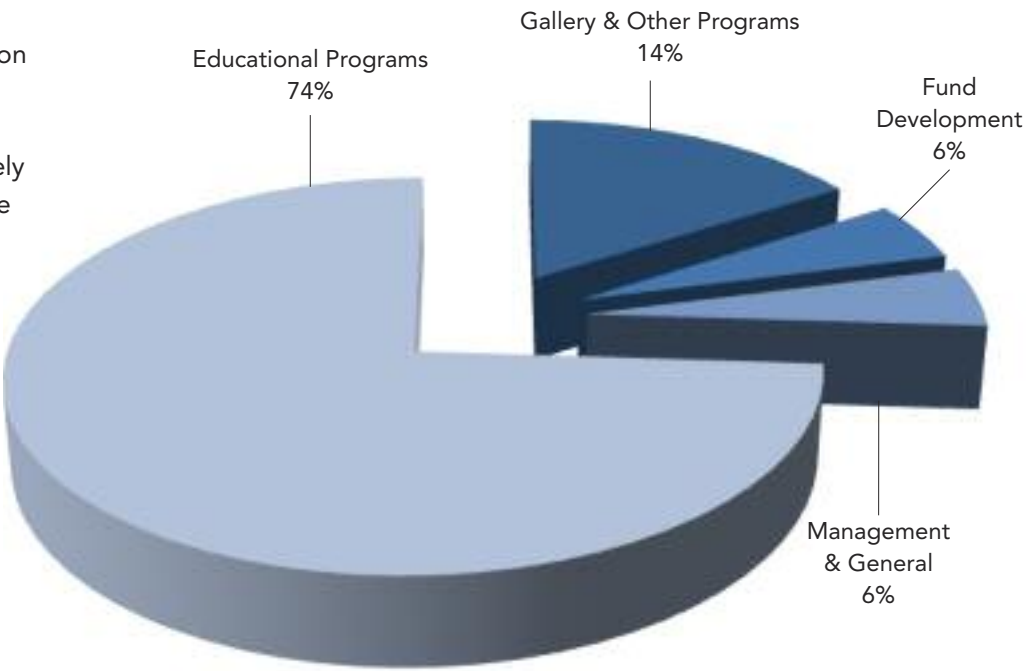
We received CARES ACT PPP funding and other State government assistance which along with a steady demand for our classes, was crucial in helping to sustain operations. Our donors also stepped up when we truly needed them with contributions in excess of \$245k. We are grateful for their commitment and dedication to Silvermine.

Over the past several years, we have steadily and deliberately built back our reserves to create financial sustainability. This strategy has enabled us to weather this crisis so far. Fortunately, we were able to add to our reserves this year and we hope that FY22 will build upon this success.

Fiscal Year Ending June 30, 2021

Operating Information

REVENUE:	
Tuition	\$950,405
Gala Net Income	800
Other Earned Income	164,201
Paycheck Protection Program Grant	121,900
Contributions & Membership	412,468
TOTAL REVENUE	\$1,649,989
EXPENSES:	
Compensation & Commissions	\$936,510
Scholarships & Outreach	35,695
Programming & Supporting Services	586,413
TOTAL EXPENSES	\$1,558,618
Depreciation Expense	38,619
RESULT AFTER DEPRECIATION	\$52,752



Silvermine Arts Center received an unqualified opinion of its financial statements by its independent auditor, Berkow, Schechter & Company LLP. Full audited financial statements are available at the Silvermine Administrative Offices.

Functional Expense Distribution

Silvermine is a 501(c)(3) not-for-profit organization

Staff

Chief Executive Officer

Barbara Linarducci

Gallery Director

Roger Mudre

Outreach Education

Coordinator

Missy Savard

Development

Leigh Taylor Mickelson

Marketing & Operations

Lisa Scroggins

Lilly Steers

Education Manager

Kelly O’Sullivan

School Operations

Manager

Clair Cohen

Registrar

Kate Muldoon

Gallery Assistant

Emily Bockisch

Maintenance

Brian Bruni

Board of Trustees

Chair

Rose-Marie Fox

Vice-Chair

Barbara Linarducci*

Treasurer

Grace Tang

Secretary

Emily McDermott

Board Members

Mark Carta

Stephanie Joyce

William Hilson

Joseph Kais

Roger Mudre*

Karen Neems

Jon Puzzuoli

Honorary Board

Cynthia Guest

Sally Sheehy

Leonard Tow

Diana Wege

*ex-officio

Institutional Partners

Daniel Edward Offutt, III Private Foundation Trust

Daphne Seybolt Culpeper Foundation

Connecticut Office of the Arts

HEARST Foundation

HEARST Connecticut Media Group

Connecticut Health and

Educational Facilities Authority

Jeniam Foundation

Colgate Palmolive Company

New Canaan Community

Foundation

DIAGEO

Blavatnik Family Foundation

Anonymous

Institute of International Education

Brooks & Falatico Associates, Inc.

Pitney Bowes Foundation, Inc.

First County Bank Foundation, Inc.

Fairfield County’s Community

Foundation

Horizon Foundation, Inc.

City of Norwalk

AMG Charitable Gift Foundation

Bankwell

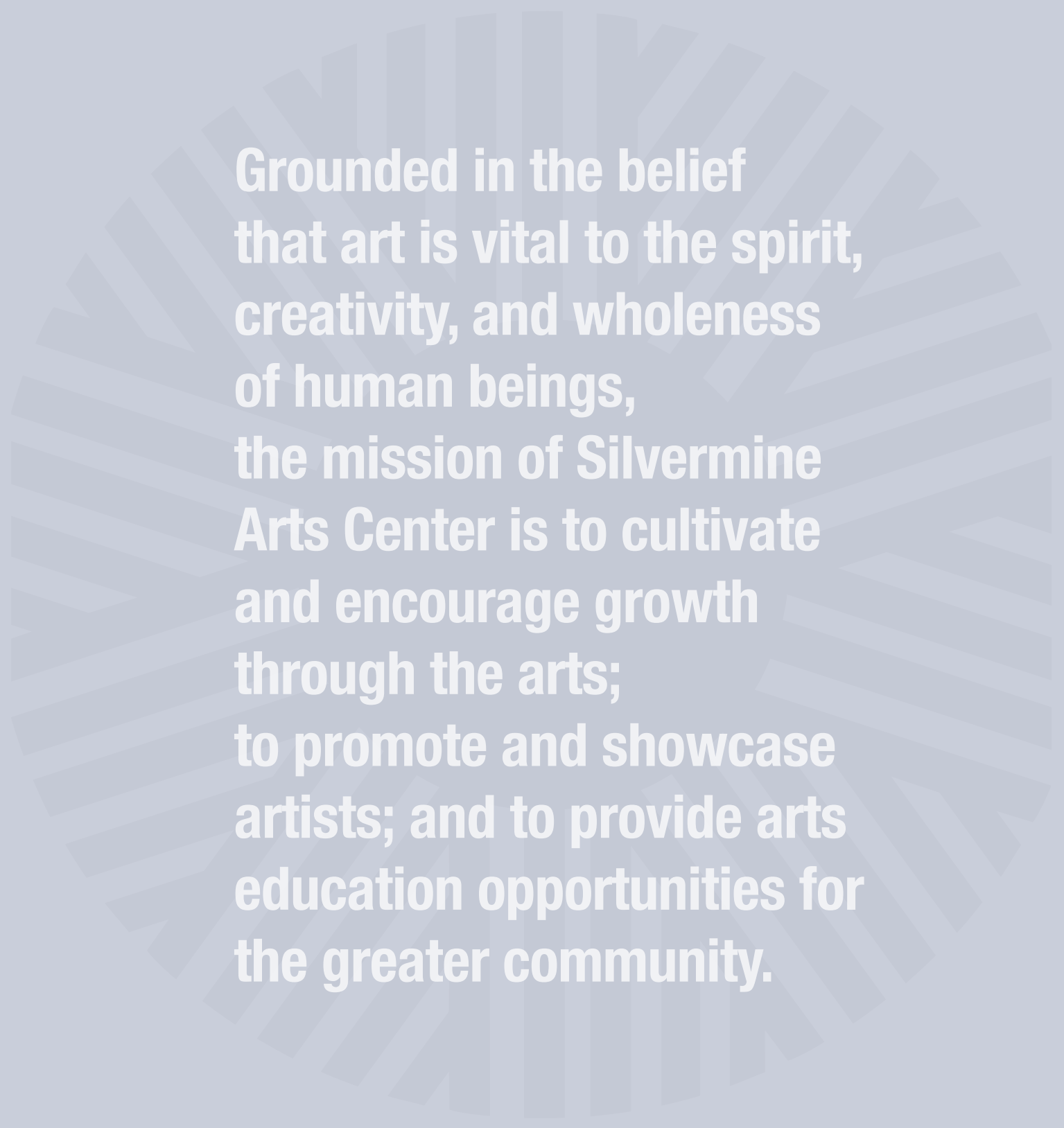
Newman’s Own Foundation

The George A. Long &

Grace L. Long Foundation

The Randolph Foundation

Connecticut Humanities



Grounded in the belief
that art is vital to the spirit,
creativity, and wholeness
of human beings,
the mission of Silvermine
Arts Center is to cultivate
and encourage growth
through the arts;
to promote and showcase
artists; and to provide arts
education opportunities for
the greater community.

Silvermine

Silvermine Arts Center 1037 Silvermine Road New Canaan, CT 06840