

silvermine



HEIDE FOLLIN
Botanical Paradigm

March 22 - April 24, 2025



Heide Follin is a contemporary abstract painter of natural environment. Her paintings have been featured in numerous solo and curated group shows. She is a graduate of the School of the Worcester Art Museum with a long list of further professional workshops and studies. She has an active studio practice at Wilson Avenue Loft Artists in South Norwalk, Connecticut.

The Poetry in Her Paintings

In her poem, *Messenger*, Mary Oliver could just as easily have been writing about Heide Follin's breathtaking and nature-inspired paintings:

*My work is loving the world.
Here the sunflowers, there the hummingbird —
equal seekers of sweetness.
Here the quickening yeast; there the blue plums.
Here the clam deep in the speckled sand.*

*Are my boots old? Is my coat torn?
Am I no longer young, and still half-perfect? Let me
keep my mind on what matters,
which is my work,

which is mostly standing still learning to be astonished...*

How perfectly the poet's words, "loving the world" and "learning to be astonished," capture the creative energy that infuses Heide Follin's paintings. Like the floral splendors of the garden that inspired them, each painting is a vibrant and skillful exploration of color, emotion, and interpretation.

Brilliantly colored flowers are the starting point. They spill forth with wild abandon, with some shapes brightly illuminated and others pushed to the background, as if they sense the approaching evening light. Layers of fabric weave their way into Heide's paintings, a departure from the specific — and a magical gateway to personal expression through abstraction. The fabric is a loving homage to her mother's creative sewing and floral design.

Heide's abstract paintings reward the observer with an intimate exploration of the garden's pleasures. They evoke both its splendor and its secrets, its magic and its memories. Her richly exuberant paintings invite us to experience the joy she finds in her world. Within these paintings we, too, explore hidden passages and discover the delight of being astonished.

Deborah Dancy, Artist, Professor Emerita



A walk in the garden

acrylic, black ink, acrylic skins, applied fabrics, rice paper
on raw unstretched canvas, 71 x 68 inch, \$6,500.



Spring tango

acrylic, black ink painted on canvas and chiffon,
28 x 50 x 1.5 inch, \$3,800.



Language of the garden
acrylic and black ink on stretched fabric,
36 x 30 x 1.5 inch, \$3,200.



The deluge
acrylic on stretched fabric,
40 x 30 x 1.5 inch, \$3,500.



What lies beneath

acrylic, charcoal, painted rice paper on unstretched canvas,
60 x 57 inch, \$4,600.



Purely botanical
acrylic, acrylic skins on stretched linen,
40 x 30 x 1.5 inch, \$3,500.



One cupful
acrylic and acrylic skins on stretched linen,
30 x 40 x 1.5 inch, \$3,500.



Ode to the tulip
acrylic, gouache on canvas,
16 x 12 inch, \$850.



Uncontrolled revelry
acrylic, black ink on canvas,
12 x 16 inch, \$850.



Peony in transition
acrylic on stretched fabric,
40 x 30 x 1.5 inch, \$3,500.



Jewel

acrylic on stretched fabric,
24 x 18 x 1.5 inch, \$1,500.



In repose

acrylic, black ink on stretched linen,
30 x 40 x 1.5 inch, \$3,500.



Field of imagination
acrylic on fabric applied to canvas,
30 x 24 x 1.5 inch, \$2,200.



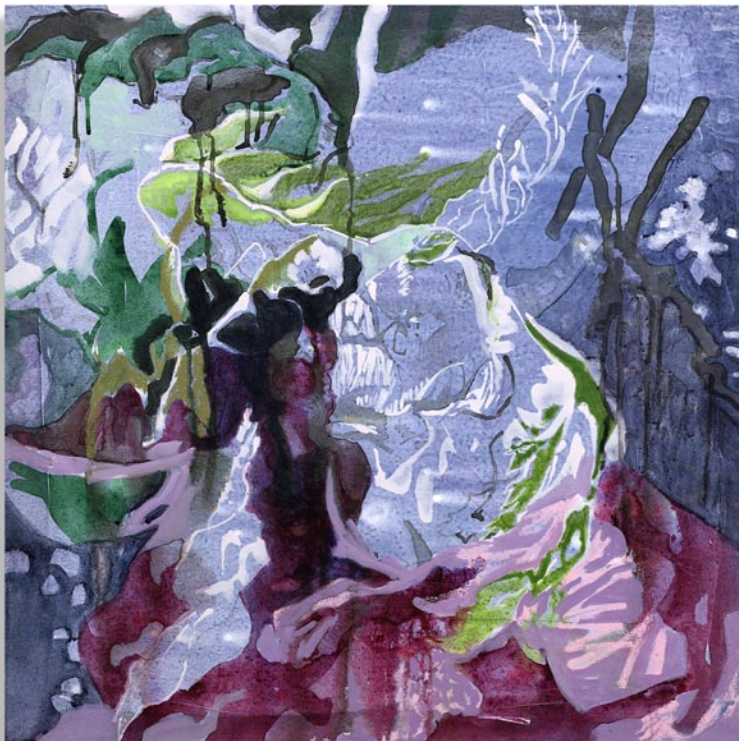
Protist

acrylic, black ink on canvas with applied inked rice paper,
30 x 24 x 1.5 inch, \$2,200.



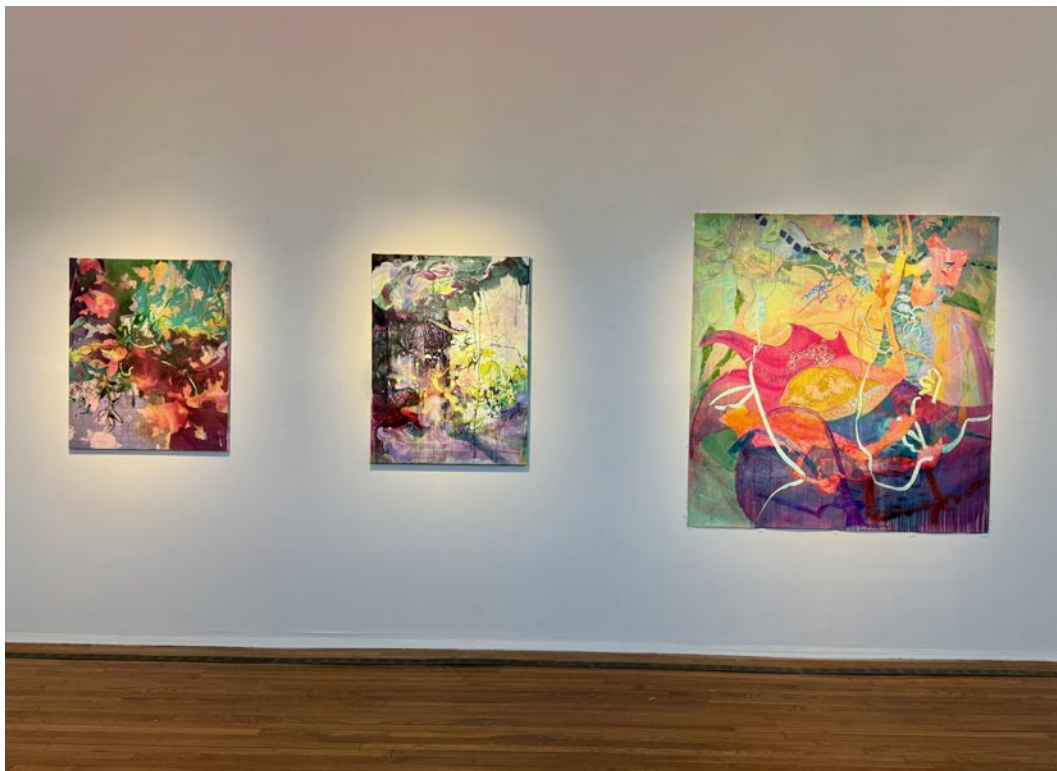
Tangled vine

acrylic, black ink with applied painted fabrics on stretched canvas,
50 x 52 x 1.5 inch, \$5,500.



Adrift in thought and meaning
acrylic, black ink on stretched fabric,
24 x 24 inch, \$1,650.









Silvermine Guild of Artists

Silvermine has been a place for artists to gather since 1906 when visionary sculptor Solon Borglum moved to the area and held annual exhibitions in his studio. He created weekly artist-critiques called the Knockers Club. Formed in 1922, The Silvermine Guild of Artists was incorporated in 1924 as a not-for-profit to provide a permanent and supportive community of artists. Guild members represent artists that have a high level of accomplishment and are selected through a jurying process.

Silvermine Guild of Artists has been a hub for some of the most talented artists in the Northeast. Guild membership has grown to almost 300 artist members nationwide, and has included such renowned artists as Abe Ajay, James Daugherty, Carlus Dyer, James Flora, James Grashow, Robert Kaupelis, Alice Neel, Gabor Peterdi, Charles Reiffel, James Rosenquist and honorary member Faith Ringgold.

Since its inception, guild membership has been a selective peer jurying process. As a result, the guild has held its membership to high standards with many members having work represented in permanent collections of some of the world's most prestigious museums, as well as prominent private and corporate collections.

Silvermine Galleries

Silvermine Galleries represents the Silvermine Guild of Artists. Our Galleries have exhibited art luminaries including Joseph Albers, Gabor Peterdi, Milton Avery, Elaine deKooning, Clement Greenberg, Alice Neel, Louise Nevelson, Larry Rivers, Christo and Jeanne-Claude, Faith Ringold, James Rosenquist, Chuck Close, Philip Johnson, and many others.

The Galleries continue to expand on our heritage through compelling exhibitions of art by emerging and internationally recognized artists. A distinguished list of curators have juried many of our landmark exhibitions, among them are Dore Ashton, Milton Avery, Bill Carroll, Tom Eccles, Andre Emmerich, Jennifer Farrell, Henry Geldzahler, Patricia Hickson, Hilton Kramer, Beth McLaughlin, Barbara O'Brien, David Ross, Holly Solomon, Allan Stone, Ann Temkin, and Marcia Tucker.

Our exhibitions are accompanied by programming that encourages appreciation of art and its role in society. Our layered approach is tailored to make our exhibitions meaningful, accessible, and enjoyable for diverse audiences of every age and background and always offer opportunities for visitors to connect with art, and each other through an exploration of ideas.

Board Of Trustees

Co-Chairs

Rose-Marie Fox
Svetlin Tchakarov

Vice Chair

Barbara Linarducci*

Secretary

Mark Carta

Treasurer

Grace Tang

Board Members

Carlos Garrido
Karl Heine
William Hilson
Michelle Loh
Michael Maresca

Guild Co-Chairs

Roger Mudre*
Jon Puzzuoli
* Ex-Officio

Honorary Board

Cynthia Guest
Sally Sheehy
Leonard Tow
Diana Wege



Gallery Staff

Gallery Director
Roger Mudre
roger@silvermineart.org
203.966.9700 x226

Gallery Assistant
Megan Stanley
gallery@silvermineart.org
203.966.9700 x220

An abstract painting featuring a dense composition of bold, expressive brushstrokes. The color palette is rich and varied, including deep purples, magentas, pinks, greens, yellows, and blues. The strokes are thick and layered, creating a sense of depth and movement. The overall effect is one of dynamic energy and emotional intensity.

Silvermine

Silvermine Arts Center

1037 Silvermine Road
www.silvermineart.org

New Canaan, CT 06840