

Silvermine

**HEIDE FOLLIN**  
Botanical Paradigm

March 22 - April 24, 2025





**Heide Follin** is a contemporary abstract painter of natural environment. Her paintings have been featured in numerous solo and curated group shows. She is a graduate of the School of the Worcester Art Museum with a long list of further professional workshops and studies. She has an active studio practice at Wilson Avenue Loft Artists in South Norwalk, Connecticut.

## The Poetry in Her Paintings

In her poem, *Messenger*, Mary Oliver could just as easily have been writing about Heide Follin's breathtaking and nature-inspired paintings:

*My work is loving the world.  
Here the sunflowers, there the hummingbird —  
equal seekers of sweetness.  
Here the quickening yeast; there the blue plums.  
Here the clam deep in the speckled sand.*

*Are my boots old? Is my coat torn?  
Am I no longer young, and still half-perfect? Let me  
keep my mind on what matters,  
which is my work,*

*which is mostly standing still learning to be astonished...*

How perfectly the poet's words, "loving the world" and "learning to be astonished," capture the creative energy that infuses Heide Follin's paintings. Like the floral splendors of the garden that inspired them, each painting is a vibrant and skillful exploration of color, emotion, and interpretation.

Brilliantly colored flowers are the starting point. They spill forth with wild abandon, with some shapes brightly illuminated and others pushed to the background, as if they sense the approaching evening light. Layers of fabric weave their way into Heide's paintings, a departure from the specific — and a magical gateway to personal expression through abstraction. The fabric is a loving homage to her mother's creative sewing and floral design.

Heide's abstract paintings reward the observer with an intimate exploration of the garden's pleasures. They evoke both its splendor and its secrets, its magic and its memories. Her richly exuberant paintings invite us to experience the joy she finds in her world. Within these paintings we, too, explore hidden passages and discover the delight of being astonished.

Deborah Dancy, Artist, Professor Emerita



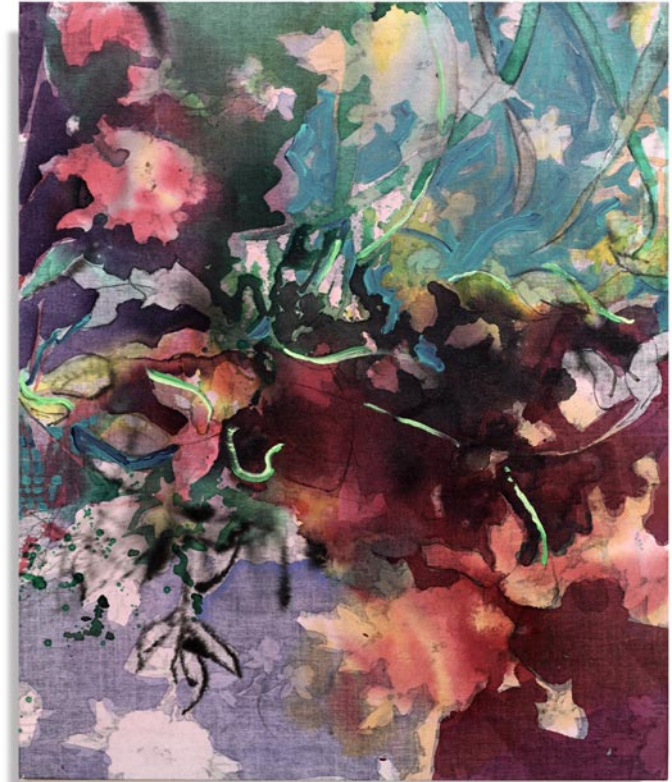


*A walk in the garden*

acrylic, black ink, acrylic skins, applied fabrics, rice paper  
on raw unstretched canvas, 71 x 68 inch, \$6,500.



*Spring tango*  
acrylic, black ink painted on canvas and chiffon,  
28 x 50 x 1.5 inch, \$3,800.



*Language of the garden*  
acrylic and black ink on stretched fabric,  
36 x 30 x 1.5 inch, \$3,200.



*The deluge*  
acrylic on stretched fabric,  
40 x 30 x 1.5 inch, \$3,500.





*What lies beneath*  
acrylic, charcoal, painted rice paper on unstretched canvas,  
60 x 57 inch, \$4,600.

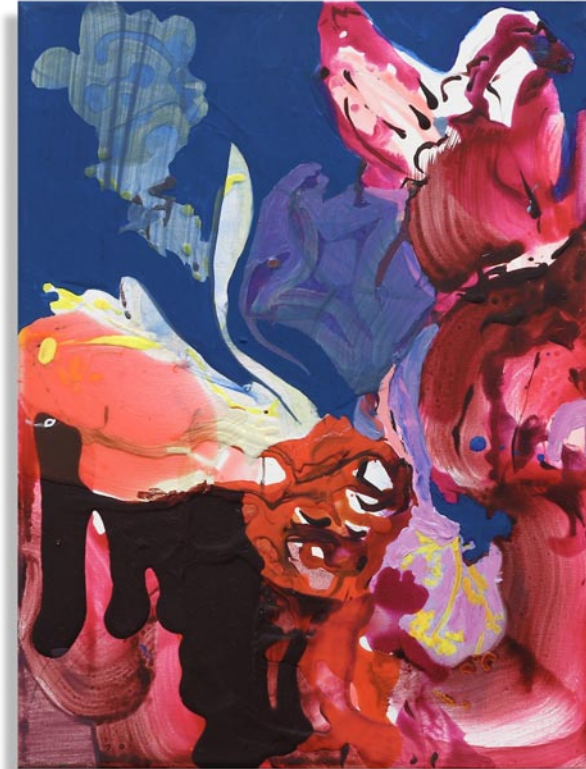




*Purely botanical*  
acrylic, acrylic skins on stretched linen,  
40 x 30 x 1.5 inch, \$3,500.



*One cupful*  
acrylic and acrylic skins on stretched linen,  
30 x 40 x 1.5 inch, \$3,500.



*Ode to the tulip*  
acrylic, gouache on canvas,  
16 x 12 inch, \$850.



*Uncontrolled revelry*  
acrylic, black ink on canvas,  
12 x 16 inch, \$850.





*Peony in transition*  
acrylic on stretched fabric,  
40 x 30 x 1.5 inch, \$3,500.



*Jewel*  
acrylic on stretched fabric,  
24 x 18 x 1.5 inch, \$1,500.



*In repose*  
acrylic, black ink on stretched linen,  
30 x 40 x 1.5 inch, \$3,500.



*Field of imagination*  
acrylic on fabric applied to canvas,  
30 x 24 x 1.5 inch, \$2,200.





*Protist*

acrylic, black ink on canvas with applied inked rice paper,  
30 x 24 x 1.5 inch, \$2,200.



*Tangled vine*  
acrylic, black ink with applied painted fabrics on stretched canvas,  
50 x 52 x 1.5 inch, \$5,500.



*Adrift in thought and meaning*  
acrylic, black ink on stretched fabric,  
24 x 24 inch, \$1,650.





## Silvermine Guild of Artists

Silvermine has been a place for artists to gather since 1906 when visionary sculptor Solon Borglum moved to the area and held annual exhibitions in his studio. He created weekly artist-critiques called the Knockers Club. Formed in 1922, The Silvermine Guild of Artists was incorporated in 1924 as a not-for-profit to provide a permanent and supportive community of artists. Guild members represent artists that have a high level of accomplishment and are selected through a jurying process.

Silvermine Guild of Artists has been a hub for some of the most talented artists in the Northeast. Guild membership has grown to almost 300 artist members nationwide, and has included such renowned artists as Abe Ajay, James Daugherty, Carlus Dyer, James Flora, James Grashow, Robert Kaupelis, Alice Neel, Gabor Peterdi, Charles Reiffel, James Rosenquist and honorary member Faith Ringgold.

Since its inception, guild membership has been a selective peer jurying process. As a result, the guild has held its membership to high standards with many members having work represented in permanent collections of some of the world's most prestigious museums, as well as prominent private and corporate collections.

## Silvermine Galleries

Silvermine Galleries represents the Silvermine Guild of Artists. Our Galleries have exhibited art luminaries including Joseph Albers, Gabor Peterdi, Milton Avery, Elaine deKooning, Clement Greenberg, Alice Neel, Louise Nevelson, Larry Rivers, Christo and Jeanne-Claude, Faith Ringold, James Rosenquist, Chuck Close, Philip Johnson, and many others.

The Galleries continue to expand on our heritage through compelling exhibitions of art by emerging and internationally recognized artists. A distinguished list of curators have juried many of our landmark exhibitions, among them are Dore Ashton, Milton Avery, Bill Carroll, Tom Eccles, Andre Emmerich, Jennifer Farrell, Henry Geldzahler, Patricia Hickson, Hilton Kramer, Beth McLaughlin, Barbara O'Brien, David Ross, Holly Solomon, Allan Stone, Ann Temkin, and Marcia Tucker.

Our exhibitions are accompanied by programming that encourages appreciation of art and its role in society. Our layered approach is tailored to make our exhibitions meaningful, accessible, and enjoyable for diverse audiences of every age and background and always offer opportunities for visitors to connect with art, and each other through an exploration of ideas.

## Board Of Trustees

### Co-Chairs

Rose-Marie Fox  
Svetlin Tchakarov

### Vice Chair

Barbara Linarducci\*

### Secretary

Mark Carta

### Treasurer

Grace Tang

### Board Members

Carlos Garrido  
Karl Heine  
William Hilson  
Michelle Loh  
Michael Maresca

### Guild Co-Chairs

Roger Mudre\*  
Jon Puzzuoli  
\* Ex-Officio

### Honorary Board

Cynthia Guest  
Sally Sheehy  
Leonard Tow  
Diana Wege



YouTube



## Gallery Staff

Gallery Director  
Roger Mudre  
roger@silvermineart.org  
203.966.9700 x226



# Silvermine

Silvermine Arts Center 1037 Silvermine Road New Canaan, CT 06840  
[www.silvermineart.org](http://www.silvermineart.org)

